



# HYDROBOOST™

## Model HTHB-HAC-RF

### GENERAL

Bottle filling station designed to retro-fit existing HAC pushbar activated models. Applicable on 115V models only. Rated for indoor use.

Supplied with redesigned basin to ensure proper fit and allow for easy installation.

Ideal for use in sports and fitness centers, educational and healthcare facilities, airports, office buildings and many other commercial buildings.

### HYDROBOOST™ RETRO-FIT BOTTLE FILLING STATION

Sensor-activated enhanced with user interface graphics. Quick fill rate is 1.5 gallons per minute on refrigerated model and 1.1 gallons per minute on ambient model. Laminar flow provides a clean fill with minimal splash and easy maintenance. Equipped with an automatic 20-second shut-off timer. Key plastic components are integrated with silver ion anti-microbial protection to inhibit growth of mold and mildew.

### LEAD REDUCTION FILTER WITH FILTER LIFE INDICATOR

Equipped with the HWF3000 WaterSentry® Plus Filter. Quick-Disconnect, ¼ turn installation and automatic inlet shut-off valve that closes when filter is removed. High-grade filter is made with activated carbon and patented ATS lead-removal media. Certified to NSF/ANSI 42 for Chlorine-Class 1, Particulate-Class 1 and Taste and Odor and NSF/ANSI 53 for Lead Reduction.

Green, yellow and red LEDs visually indicate when filter maintenance is required. For service replacement, order as 55898C (single) or 55898C\_3PK (three filters).

### GREEN COUNTER™

Visually displays count of plastic bottles saved from the landfills.

## Bottle Filler Retro-fit for HAC models



### SUGGESTED SPECIFICATION

Models HTHB-HAC-RF shall retro-fit existing 115V pushbar activated HAC models. Shall include redesigned basin to ensure proper fit and function. Shall include the WaterSentry® Plus filter, certified to NSF/ANSI 42 and 53 for lead reduction, with visual monitor to indicate when replacement is necessary. Shall be sensor-actuated with auto shut-off timer and bottle counter. Shall provide 1.1-1.5 GPM with laminar flow for minimal splash. Shall include anti-microbial protected plastic components. Shall comply with ADA standards, be U.L. Listed and certified to lead-free compliance including NSF/ANSI 61-Annex G, AB1953.

Protected by Halsey Taylor's Limited Warranty. Warranty details available at [halseytaylor.com](http://halseytaylor.com).

JOB NAME: \_\_\_\_\_

ENGINEER/CONTRACTOR NAME: \_\_\_\_\_

APPROVAL: \_\_\_\_\_

DATE: \_\_\_\_\_

NOTE: Continued product improvement makes specification sheets subject to change without notice.



# HTHB-HAC-RF

## Single HAC Cooler with Retro-fit HydroBoost™ Bottle Filler

(CONTINUED)

### OPERATING PRESSURES

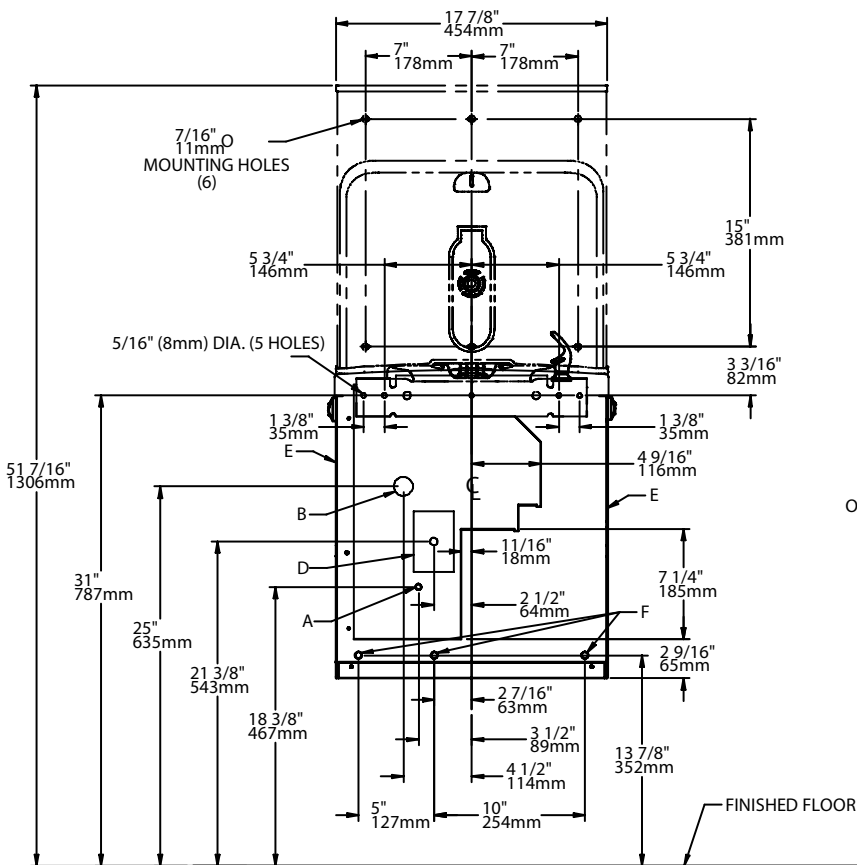
Supply water – 105 psi maximum

Minimum 40 psi supply line pressure required in special circumstances when both units are in use simultaneously to ensure adequate flow.

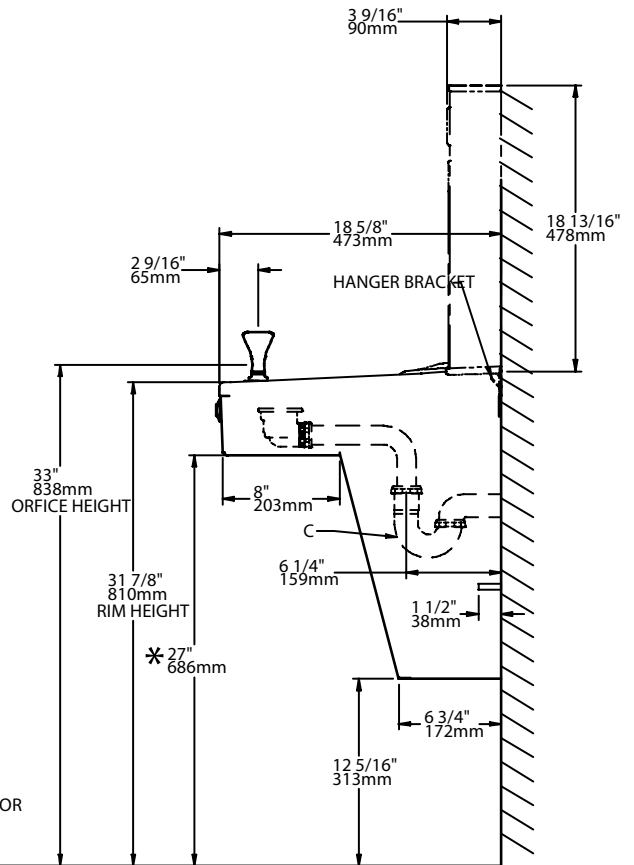
### ELECTRICAL

HydroBoost Station equipped with plug-in, 3-wire ground type service cord. Install 120-volt receptacle, rated at 15-amp minimum, to receive 3-wire parallel blade grounding type male plug.

FRONT VIEW



SIDE VIEW



\*ADA Requirement

**LEGEND:**

- A = Recommended Water Supply Location. 3/8" O.D. Unplated Copper Tube Connect Stub 1-1/2" (38mm) Out From Wall. Shut Off Valve Not Provided
- B = Recommended Location for Waste Outlet 1-1/4" O.D. Drain
- C = 1-1/4" Trap Not Furnished
- D = Electrical Supply (3) Wire Recessed Box
- E = Insure Proper Ventilation By Maintaining 6" (152mm) Min. Clearance From Cabinet Louvers to Wall
- F = 7/16" Bolt Holes For Fastening Unit To Wall

# HTHB-HAC-RF

## Bi-Level HAC Cooler with Retro-fit HydroBoost™ Bottle Filler

(CONTINUED)

### OPERATING PRESSURES

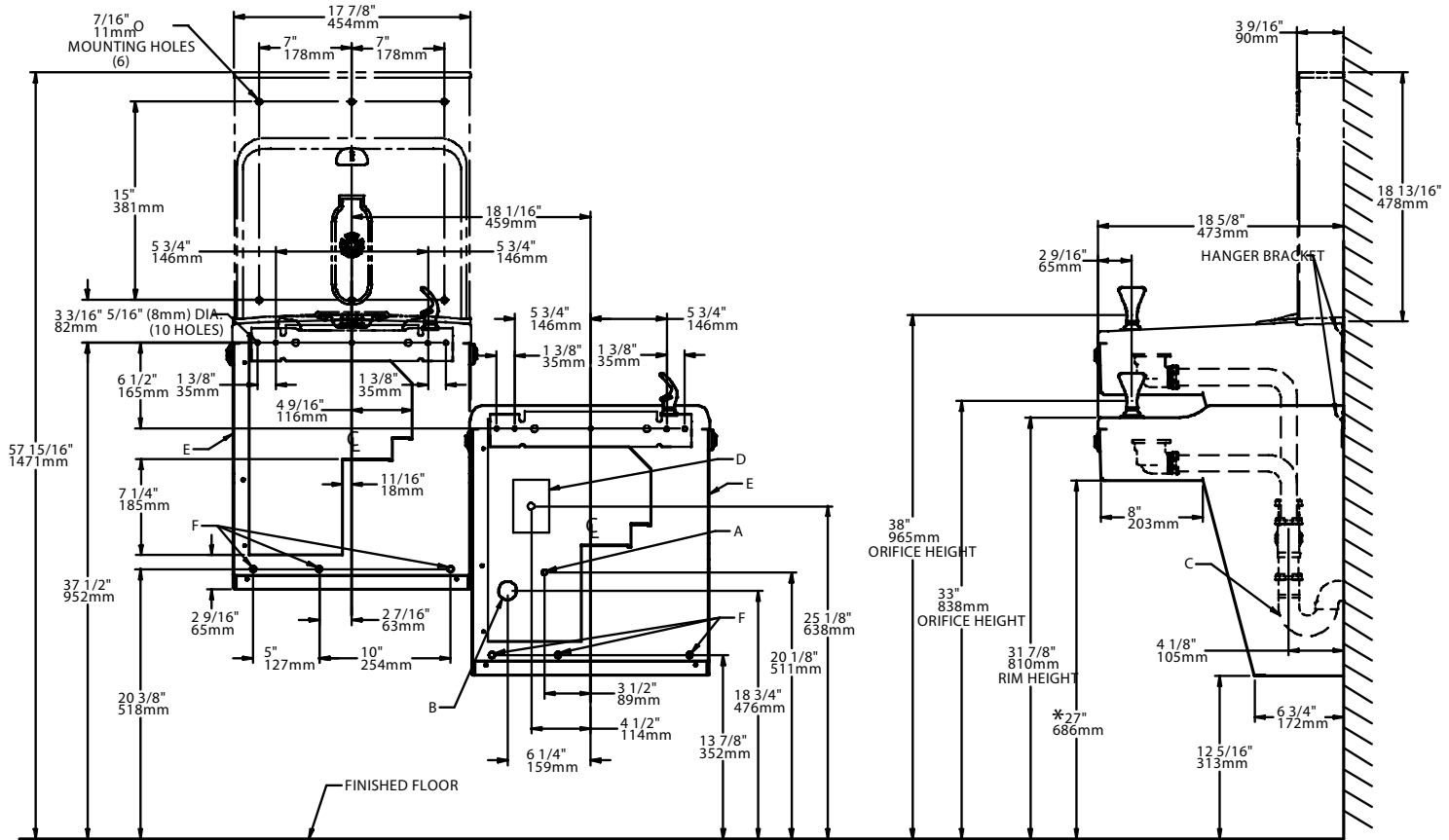
Supply water – 105 psi maximum  
 Minimum 40 psi supply line pressure required in special circumstances when both units are in use simultaneously to ensure adequate flow.

### ELECTRICAL

HydroBoost Station equipped with plug-in, 3-wire ground type service cord. Install 120-volt receptacle, rated at 15-amp minimum, to receive 3-wire parallel blade grounding type male plug.

**FRONT VIEW**

**SIDE VIEW**



**LEGEND:**

- A = Recommended Water Supply Location. 3/8" O.D. Unplated Copper Tube Connect Stub 1-1/2" (38mm) Out From Wall. Shut Off Valve Not Provided
- B = Recommended Location for Waste Outlet 1-1/2" O.D. Drain
- C = 1-1/2" Trap Not Furnished
- D = Electrical Supply (3) Wire Recessed Box
- E = Insure Proper Ventilation By Maintaining 6" (152mm) Min. Clearance From Cabinet Louvers to Wall
- F = 7/16" Bolt Holes For Fastening Unit To Wall

\*ADA Requirement