



MODEL: HVRGRN8



Barrier-Free Cooler



This water cooler is certified to NSF/ANSI 61.

GENERAL

GreenSpec® Listed, energy and water efficient model. Self-contained, electric, refrigerated wall-mounted water cooler designed to be easily accessible to physically challenged individuals. When properly installed, unit meets state and federal requirements as defined by the Americans with Disabilities Act for both children or adults. Unit is UL listed for indoor and outdoor service.

CABINET

Stainless steel panels resists wear and corrosion. Durable satin finish helps hide water spots and fingerprints.

COOLER TOP

Non-corrosive stainless steel cooler top, number 300 series with satin finish resists stains and corrosion and is easy to maintain. Anti-splash ridge reduces splatter. Contoured to insure proper drainage.

WATER CONSERVATION BUBBLER

Designed to reduce water usage while still delivering a satisfying stream. Vandal-resistant bubbler is one-piece, chrome-plated, with integral hood guard design to prevent contamination from other users, airborne deposits and tampering.

PUSHBUTTON ACTUATION MECHANISM

Self-closing, vandal-resistant pushbutton does not require grasping or twisting.

AUTOMATIC STREAM HEIGHT REGULATOR

Self-closing assembly is located inside unit to prevent tampering. Unit resists corrosion and liming. A constant stream height is automatically maintained under line pressures that vary from 20 to 105 psi.

INLET STRAINER

Easily cleaned in-line strainer screen traps particles of 140 microns or larger before they enter the waterway.

TEMPERATURE CONTROL

Positive sensing thermostat for controlling temperature of storage tank water. Factory set at 50° F Adjustable ± 5° F.

STORAGE TANK

Non-pressurized stainless steel evaporator/storage tank for long life. Waterways are certified to NSF/ANSI 61, far exceeding the requirements of the Safe Drinking Water Act.

REFRIGERATION SYSTEM

High-Efficiency, hermetically sealed, positive start compressor with lifetime lubrication and built-in overload protection, efficient capillary sizing, large capacity dryer-strainer, and self-lubricated fan cools copper/aluminum condenser. System uses R134A refrigerant. Protected by Halsey Taylor's Limited 5 Year Warranty.

VENTILATION

Insure proper ventilation by maintaining 6" (152mm) minimum clearance from cabinet louvers to wall.

SUGGESTED SPECIFICATIONS

Shall be GreenSpec® Listed, vandal resistant, self-contained electric refrigerated water cooler that shall deliver 8.0 GPH of 50° F water at 90° F ambient and 80° F inlet water. Shall have stainless steel basin with removable drain strainer. Bubbler shall be one-piece, lower-flow, vandal-resistant. Separate valve and automatic stream regulator shall be mounted within cabinet. Refrigeration system shall employ high-efficiency, positive start compressor using R134A, non-pressurized tank with optimized heat transfer and totally encapsulated insulation and be controlled by positive sensing thermostat. Unit shall comply with ANSI 117.1 and ADA for visual and motion disabilities. Unit shall be listed for indoor and outdoor service. The manufacturer shall certify the unit to meet the requirements of NSF/ANSI 61 and the Safe Water Drinking Act. Unit complies with ARI Standard 1010.

NOTE: Continued product improvement makes specifications subject to change without notice. See Halsey Taylor website for most current spec sheet.

Stainless Steel Finish Only

Optional Accessory Package (extra cost)

- Water Filter and Glass Filler (Factory Installed Only, Model HVRGRN8-GFWF)

JOB NAME: _____

 ENGINEER/CONTRACTOR NAME: _____

 APPROVAL: _____
 DATE: _____

HVR BARRIER-FREE SERIES

Model No.	GPH Capacity Cooled to 50° F*				Base Rate Cap.	F.L. Amps	Shipping Weight lb.	Rated Watt Usage
	Ambient Air Temp							
	70°F	80°F	90°F†	100°F				
HVRGRN8	9.7	8.8	8.0	7.2	8.0	2.8	66	260

* With projector service and tap water at 80° F

† UL listed and complies with ARI Standard 1010

Trap and service stop not included



HVRGRN8

GreenSpec® Listed, High Efficiency, Vandal-Resistant Indoor/Outdoor Barrier-Free Cooler

(CONTINUED)

MOUNTING HEIGHT

Mounting height recommended 31 13/16" from basin to floor. May be mounted at any desired height. Check local codes.

MOUNTING INSTRUCTIONS

Mount trap and install service stop to supply line. Anchor hanger bracket securely to wall on all sides. To insure proper engaging of waste line into trap, centerline of trap must be 6 1/4" from

wall face. Remove slip nut and gasket from trap and install on waste line tube. Hang cooler on bracket and engage waste line tube into trap inlet. Centerline height of waste outlet will vary from floor line depending on mounting height. Install 3/8" supply tube to in-line strainer. Secure bottom of cooler to wall using holes provided.

Trap and service stop not included.

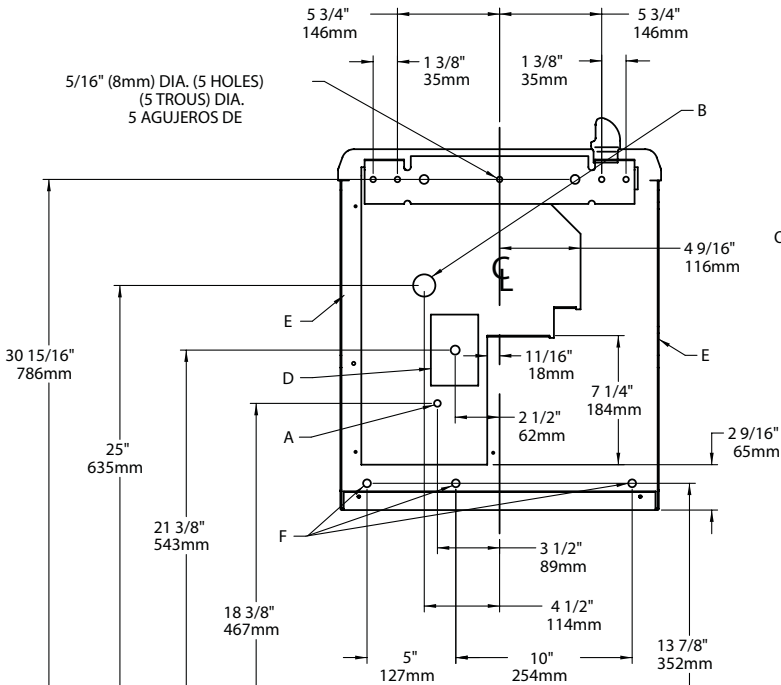
OPERATING PRESSURES:

Supply water - 105 psi maximum

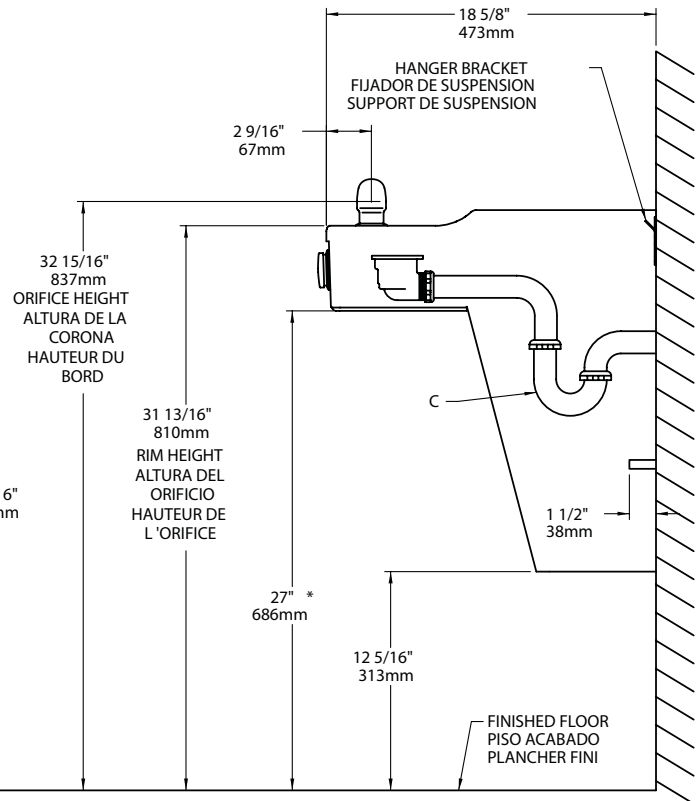
ELECTRICAL

120 Volt / 60 Hz units furnished with plug-in, 3 wire grounding type service cord. Standard 120 volt, 60 Hz, single phase. Install 120 volt receptacle rated at 15-amp minimum to receive 3-wire parallel blade grounding type male plug.

FRONT VIEW / WALL LAYOUT



SIDE VIEW



LEGEND:

- A = RECOMMENDED WATER SUPPLY LOCATION. SHUT OFF VALVE (NOT FURNISHED) TO ACCEPT 3/8" O.D. UNPLATED COPPER TUBE.
- B = RECOMMENDED LOCATION FOR WASTE OUTLET 1-1/4" O.D. DRAIN
- C = 1-1/4" TRAP NOT FURNISHED
- D = ELECTRICAL SUPPLY (3) WIRE RECESSED BOX
- E = INSURE PROPER VENTILATION BY MAINTAINING 6" (152 mm) (MIN.) CLEARANCE FROM CABINET LOUVERS TO WALL.
- F = 7/16 BOLT HOLES FOR FASTENING UNIT TO WALL

* Adult ADA requirement (shown) - 27" (686mm);
Child ADA requirement - 24" (608mm).
Adjust all other measurements accordingly.