

# 1501

## Wall Mounted Drinking Fountain



### FEATURES & BENEFITS

#### Barrier-Free

Barrier-free capabilities combined with its ease of use allows for a number of installation location possibilities.

#### Integrated Trap

Spacious fountain design allows for the trap to be internally mounted which allows for easy access, and aids and reduces the installation process.

#### Construction

Heavy-duty cast iron bowl with a glossy white enamel finish is designed for the toughest of applications, and at the same time is gentle to all users with its soft rounded corners. Unit also ships with vandal-resistant bottom plates to provide added peace of mind.

#### Mounting

3/16" steel mounting plate with supplied mounting hardware provides a solid unit base and allows for easy installation to a framed wall.

#### Push Button

With its patented (Pat.# 6,981,692) push-button valve assembly which allows for front access stream adjustment as well as cartridge and strainer access, this fountain offers the ultimate in ease of maintenance.

#### Bubbler Head

Polished chrome-plated brass bubbler head features an integral basin shank for added strength, and is equipped with a shielded, anti-squirt orifice that provides a steady sanitary source of water.



### SPECIFICATIONS

Model 1501 "Hi-Lo" wall mounted barrier-free drinking fountain shall include dual white enameled-iron basins, push-button operated valves with front-accessible cartridge and flow adjustment, polished chrome-plated brass vandal-resistant bubbler heads, polished chrome-plated brass vandal-resistant waste strainers, vandal-resistant bottom plates, white powder-coated stainless steel back panel with matching in-wall mounting plate, and 1-1/4" IPS traps.

### OPTIONS

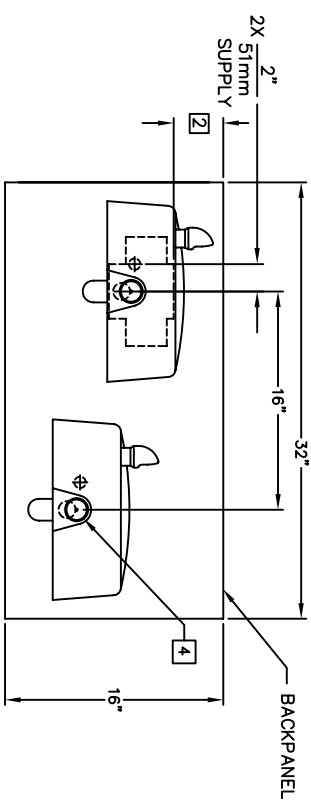
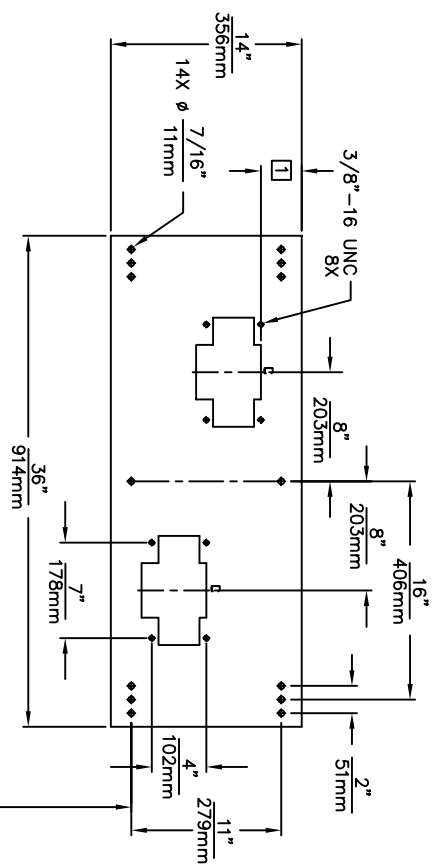
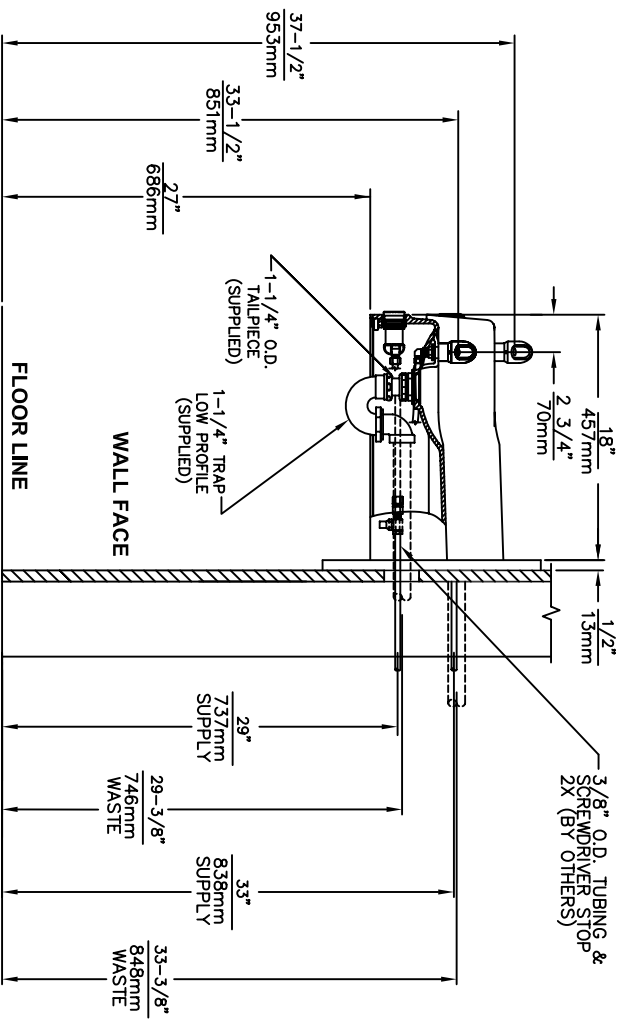
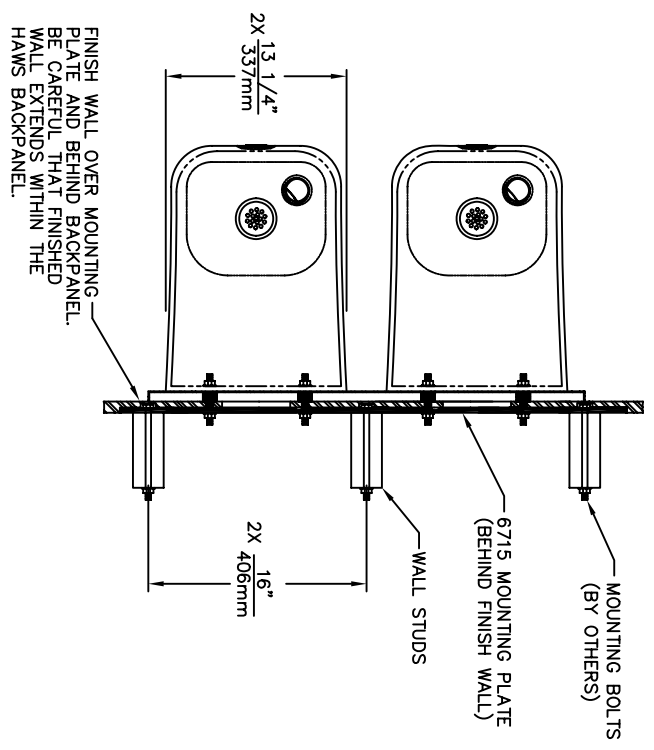
- Bubbler Head: Model 5725 EnviroGard™ bubbler is a polished chrome-plated solid brass bubbler head with stainless steel water activated pop up canopy. (Pat.# 7,025,282)
- Filter: Model 6426, 12" x 2", in-line lead removal element that reduces lead from incoming water supply.
- Support Carrier: Model 6800 universal in-wall mounting support for use with most fountains.
- Chiller: Model HCR8, chiller provides for instantaneous cooling to meet a continuous demand for chilled water.

### APPLICATIONS

Perfect for either public or private settings, our gleaming white enameled iron series is one of the sturdiest wall mounted fountains Haws produces. This unit is the perfect fit for high traffic areas where there is a greater need for multiple drinking stations. Elegant gloss finish and color consistency throughout the enameled iron maintain the fountain's overall appeal so it always remains looking as new as it did when it was installed. Specifically, this type of wall mounted drinking fountain may be placed in settings such as: parks, schools, and other indoor/outdoor environments where the temperature remains above freezing.

Model meets all current Federal Regulations for the disabled including those in the Americans with Disabilities Act. Haws manufactures drinking fountains, electric water coolers and electric drinking fountains to be lead-free by all known definitions including ANSI/NSF Standard 61, Section 9, California Proposition 65, and the Federal Safe Drinking Water Act.





- NOTES:**
- 3" DIM TO SLOTTED OPENING ON THE MOUNTING PLATE MUST BE ON THE TOP L.H. SIDE WHEN INSTALLED.
  - 4-5/16" DIM TO SLOTTED OPENING ON THE BACKPANEL MUST BE ON TOP L.H. SIDE WHEN INSTALLED.
  - WHEN INSTALLING THIS UNIT, LOCAL, STATE, OR FEDERAL CODES SHOULD BE ADHERED TO FOR INSTALLATION DIMENSIONS (LOCATIONS), WASTE AND SUPPLY REQUIREMENTS OTHER THAN SHOWN.
  - REFER TO 5874/VRK5874 OPERATION AND MAINTENANCE MANUAL FOR PUSH BUTTON AND VALVE INSTALLATION/MAINTENANCE INSTRUCTIONS.

**Haws Corporation**

INFO FAX : 1-888-FAX-HAWS (1-888-329-4297)

1455 Kiappa Ln, Sparks NY 13843  
 Phone: 775-359-4712 Fax: 775-359-7424  
 Haws Ag Buchweg 3 CH-3401 Burgdorf Switzerland  
 Haws King Pte Ltd 74 Sungei Kodat Loop Singapore 729531  
 e-mail: Haws@hawsco.com website: www.hawsco.com

ORDER NO.:	14939A00	DATE:	05/15/01
REG. NO.:	1501	MODEL(S):	1501
DATE:	05/15/01	INFO FAX DOC #:	21501
APPROVER:		SCALE:	1:1X
		TRAINING TYPE:	INSTALLATION/FAKBACK
		SIZE:	A
		SHEET:	1 OF 1



# INSTALLATION, OPERATION & MAINTENANCE INSTRUCTIONS

1455 Kleppe Lane ♦ Sparks, NV 89431-6467 ♦ (775) 359-4712 ♦ Fax (775) 359-7424  
HAWS AG ♦ Bachweg 3 ♦ CH-3401 Burgdorf ♦ Switzerland  
Haws Mfg. Pte Lt. ♦ 2A Sungei Kadet Drive ♦ Singapore 729554  
Avlis-Avenida Senador, Testonio Vilela ♦ 505 Jardim Aeroporto ♦ Itu, S.P. 13304-550 ♦ Brasil  
E-mail: [haws@hawsco.com](mailto:haws@hawsco.com) ♦ website: [www.hawsco.com](http://www.hawsco.com)

No. 2076988(6)

## Model 1501 Drinking Fountain

**NOTE TO INSTALLER:** Please leave this information with the Maintenance Department.

### LIMITED WARRANTY

HAWS® warrants that all of its products are guaranteed against defective material or poor workmanship for a period of **one year from date of shipment**. HAWS liability under this warranty shall be discharged by furnishing without charge F.O.B. HAWS Factory any goods, or part thereof, which shall appear to the Company upon inspection to be of defective material or not of first class workmanship, provided that claim is made in writing to company within a reasonable period after receipt of the product. Where claims for defects are made, the defective part or parts shall be delivered to the Company, prepaid, for inspection. HAWS will not be liable for the cost of repairs, alterations or replacements, or for any expense connected therewith made by the owner or his agents, except upon written authority from HAWS, Sparks, Nevada. HAWS will not be liable for any damages caused by defective materials or poor workmanship, except for replacements, as provided above. Buyer agrees that Haws has made no other warranties either expressed or implied in addition to those above stated, except that of title with respect to any of the products or equipment sold hereunder and that HAWS shall not be liable for general, special, or consequential damages claimed to arise under the contract of sale. The drinking fountain manufactured by HAWS is warranted to function if installation and maintenance instructions provided are adhered to. The units also must be used for the purpose for which they were intended.

**NO OTHER WARRANTIES EXPRESSED OR IMPLIED ARE AUTHORIZED, PROVIDED OR GIVEN BY HAWS.**

**SHOULD YOU EXPERIENCE DIFFICULTY WITH THE INSTALLATION OF THIS MODEL, PLEASE CALL:**

**1-800-766-5612**

**FOR PARTS CALL:**

**1-800-758-9378**

**(U.S.A. AND CANADA ONLY) MONDAY-THURSDAY: 6:00 A.M. – 4:00 P.M. PST  
FRIDAY: 6:00 A.M – 1:00 P.M. PST**

**RECOMMENDED TOOLS:** Hack saw, pipe joint sealant, screwdriver, level, 12" adjustable wrench, 10" pipe wrench, 5/64" hex key wrench, 9/16", 1/2", 7/16" socket wrench or open end wrench.

**LOCATION OF UNIT:** The Model 1501 Drinking Fountain is a wheelchair accessible drinking water facility. The height dimensions shown, meet current ADA requirements. When installing this unit, local, state or federal codes should be adhered to. If height other than shown is required, then dimensions must be adjusted accordingly.

**SUPPLY LINE:** The minimum recommended line size is 1/2" IPS with 30-90 psi (2-6 ATM) flowing pressure. Where sediment or mineral content is a problem, an inlet filter is recommended.

**PLUMBING CONNECTIONS:** Inlet is 3/8" O.D. compression fitting. Waste trap outlet is 1-1/4" IPS.

**MAINTENANCE:** Periodically clean the strainer. Refer to 5874 Valve Manual for more information.

<b>TROUBLESHOOTING</b>	
<b>PROBLEM</b>	<b>REPAIR CHECKLIST</b>
1. Insufficient bubbler flow.	<ul style="list-style-type: none"><li>1a. Check that inlet screwdriver stop valve is in wide-open position.</li><li>1b. Verify minimum 30 psi flowing supply pressure.</li><li>1c. Clean strainer. See 5874 Valve Manual.</li><li>1d. Adjust valve to increase flow. Use front adjust screw or see 5874 Valve Manual.</li></ul>

## INSTALLATION PROCEDURE

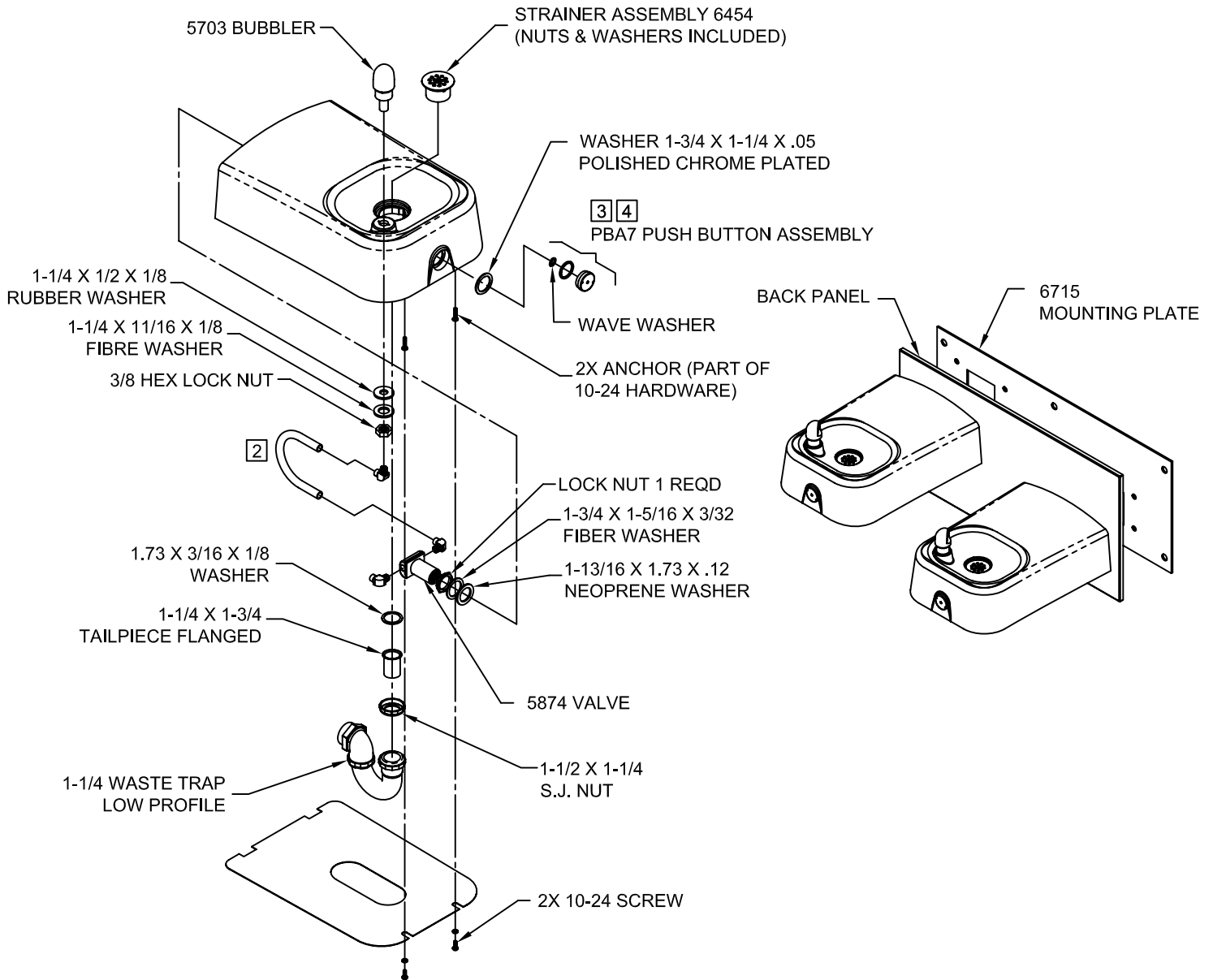
Refer to Installation Drawing for mounting height. For steps below, refer to exploded view.


- Step 1:** Remove elbow, hex lock nut and washers from bubbler heads, set aside. Install bubbler heads through receptor. Install respectively rubber washer, fiber washer, then nut onto bubbler shank. Securely tighten nut. Install elbow into bottom of bubbler head.
- Step 2:** Remove push button assembly from 5874 valves with spanner wrench provided. Be sure to also remove (chrome plated) ring nut and (chrome plated) washer from valves. At this point, carefully follow installation instructions shown on page 5 of 5 of **5874 Valve/Push Button Operation and Maintenance Manual** under heading: **“INSTALLATION INSTRUCTIONS FOR 5874PB”**
- Step 3:** Make the following tubing connections: From bubbler to the outlet side of control valve.
- Step 4:** Place strainer into receptor (using putty), secure in place using a fiber washer and lock nut.
- Step 5:** Mount fountain with back panel to mounting plate using 3/8-16 hardware (provided).
- Step 6:** Flush supply line to clear debris. Connect to a 1/2” NPT supply line and tighten.
- Step 7:** Make certain that fountain is level and well secured to wall. Connect waste trap to a 1-1/4” IPS waste pipe (to be supplied by customer).
- Step 8:** Completely open the screwdriver stop (not supplied) and check for leaks.
- Step 9:** Adjust valves for desired flow height. See 5874 Valve Manual (supplied).
- Step 10:** Attach bottom plates to fountain using #10-24 hardware provided.

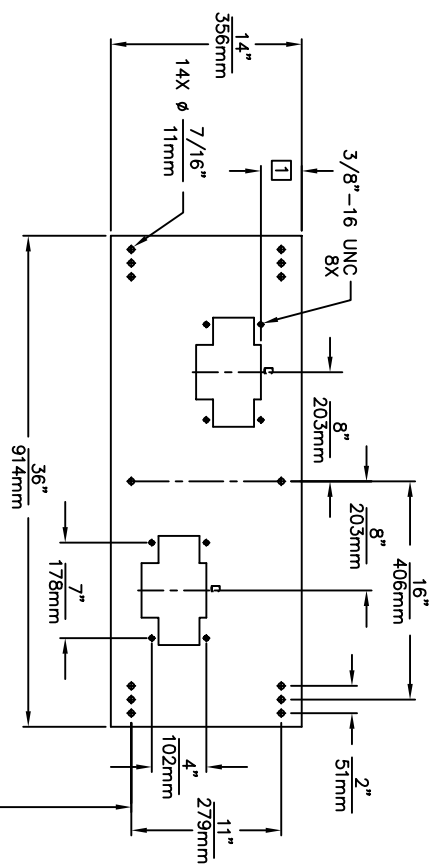
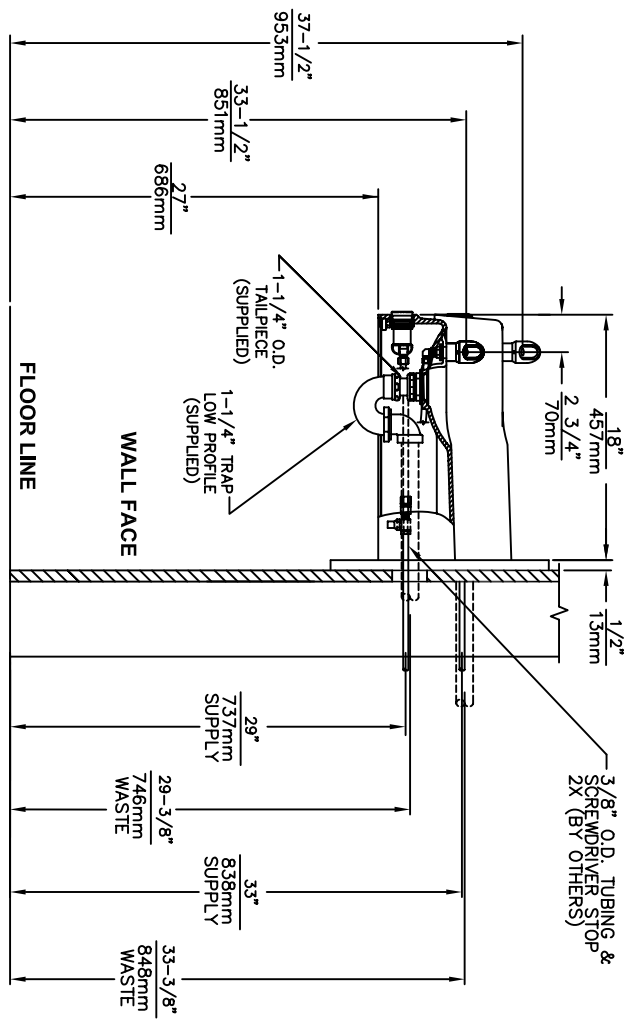
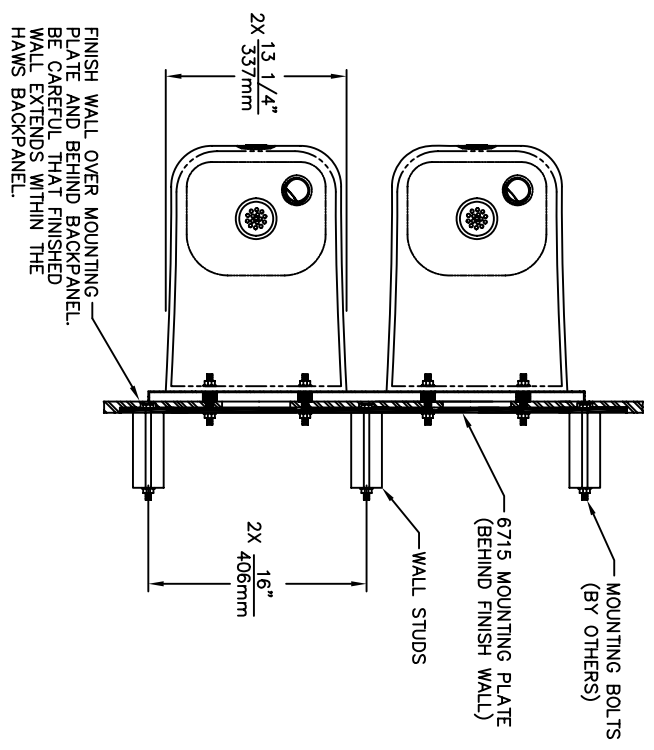
# PARTS BREAKDOWN

**NOTES:**

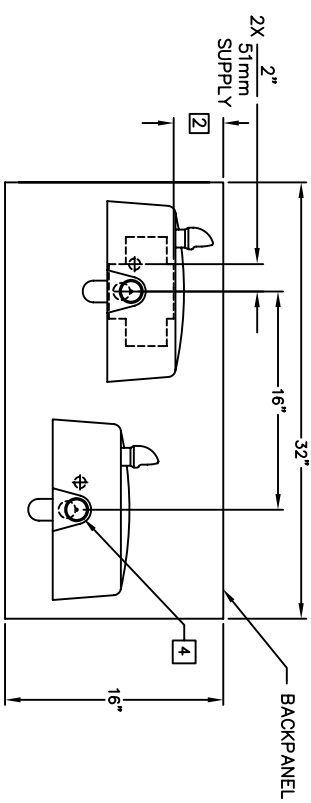
1. CUT TUBING TO FIT AS REQUIRED.
2. CONNECT CLEAR "POLYETHYLENE" TUBING ON FREE FLOW SIDE (VALVE TO BUBBLER HEAD) ONLY.
3. REFER TO 5874/VRK5874 OPERATION AND MAINTENANCE MANUAL FOR INSTALLATION INSTRUCTIONS.
4. MUST APPLY 1 DOT OF LOCTITE 222MS THREADLOCKER ON FEMALE THREADS OF PUSH BUTTON. SEE 5874 OPERATION AND MAINTENANCE MANUAL (PAGE 5 OF 5) FOR PROPER APPLICATION PROCEDURE.



<p><b>WHEN ORDERING PARTS PLEASE SPECIFY YOUR MODEL NUMBER</b></p>			1455 KLEPPE LANE SPARKS, NEVADA	BACHWEG 3 CH3401 BURGDORF SWITZERLAND
	DRAWN BY: A. DAY	DATE: 05/01/01	CHECK BY:	APP'D BY:
	TITLE: 1501			PART NUMBER: 0002076988
	DRAWING TYPE: PARTS BREAKDOWN			DRAWING NUMBER: 0002076988
				SCALE: 1/6
				REV. 6



**6715 MOUNTING PLATE**  
 MUST BE INSTALLED BEFORE FINISH WORK.  
 THIS PLATE IS A STANDARD ITEM ON MODEL 1501.



- NOTES:**
- 1 3" DIM TO SLOTTED OPENING ON THE MOUNTING PLATE MUST BE ON THE TOP L.H. SIDE WHEN INSTALLED.
  - 2 4-5/16" DIM TO SLOTTED OPENING ON THE BACKPANEL MUST BE ON TOP L.H. SIDE WHEN INSTALLED.
  - 3 WHEN INSTALLING THIS UNIT, LOCAL, STATE, OR FEDERAL CODES SHOULD BE ADHERED TO FOR INSTALLATION DIMENSIONS (LOCATIONS), WASTE AND SUPPLY REQUIREMENTS OTHER THAN SHOWN.
  - 4 REFER TO 5874/VRK5874 OPERATION AND MAINTENANCE MANUAL FOR PUSH BUTTON AND VALVE INSTALLATION/MAINTENANCE INSTRUCTIONS.

**Haws Corporation**  
 INFO FAX : 1-888-FAX-HAWS (1-888-329-4297)  
 1455 Kiappa Ln, Sparks NV, 89431  
 Phone: 775-359-4712 Fax: 775-359-7424  
 Haws Ag Bachweg 3 CH-3401 Burgdorf Switzerland  
 Haws King Pte Ltd 74 Sungei Kodat Loop Singapore 729531  
 e-mail: Haws@hawsco.com website: www.hawsco.com

ORDER NO.	14939A00
DATE	05/15/01
SCALE	1/8" = 1'
APPROVED	
DESIGNED BY	1501
DATE	05/15/01
CHECKED	
DATE	
MODEL(S)	1501
INFO FAX DOC #	21501
SCALE	1/8" = 1'
BRANDING TYPE	INSTALLATION/FAKBACK
SIZE	A
SHEET	1 OF 1