

Wall Mounted Electric Water Cooler



Model HWO8 shall deliver a minimum of 8 gph of water at 50°F water at 80°F inlet water at 90°F ambient (room temperature).

Bubbler shall have flexible guard, lever handle and built-in pressure regulator to deliver smooth steady flow at supply pressures of 20 to 120 psi. Basin shall be designed to eliminate splashing and standing water. Cabinet finish shall be granite. Frame to be constructed of welded heavy-gauge galvanized steel. Cooling system shall use R-134a refrigerant.

Shall be Listed by Underwriters Laboratories, certified by Canadian Standard Association and conform to European Union Directives. Shall comply with ANSI/NSF 61

Model HWO8 delivers 8 gph of chilled drinking water.

Standard Features

Waterways are lead-free in materials and construction
Dial-A-Drink Bubbler® with flexible guard
Stainless steel top
Heavy-gauge steel frame
High-efficiency cooling tank and coil
Refrigerant R-134a

Finishes

Granite powder-coated paint

Options (at additional charge)

Glass Filler (Factory Installed)

Components in this water cooler are lead-free as defined by the Safe Drinking Water Act Amendments of 1986, and the Lead Contamination Control Act of 1988.

Model HFO8

50°F Drinking Water
90°F Ambient Air Temperature
Rating Condition 80°F inlet water temperature
Rated Capacity gph-8.0
Base Rate gph-8.0
Pre-Cooler: No
115 Volts, 60 Hz
Compr. HP: 1/5
Full Load Amps: 4.6
Rated Watts: 370
Glassfiller Acc. Option: Yes
Net Wt Approx: 62 Lbs.

HWO8

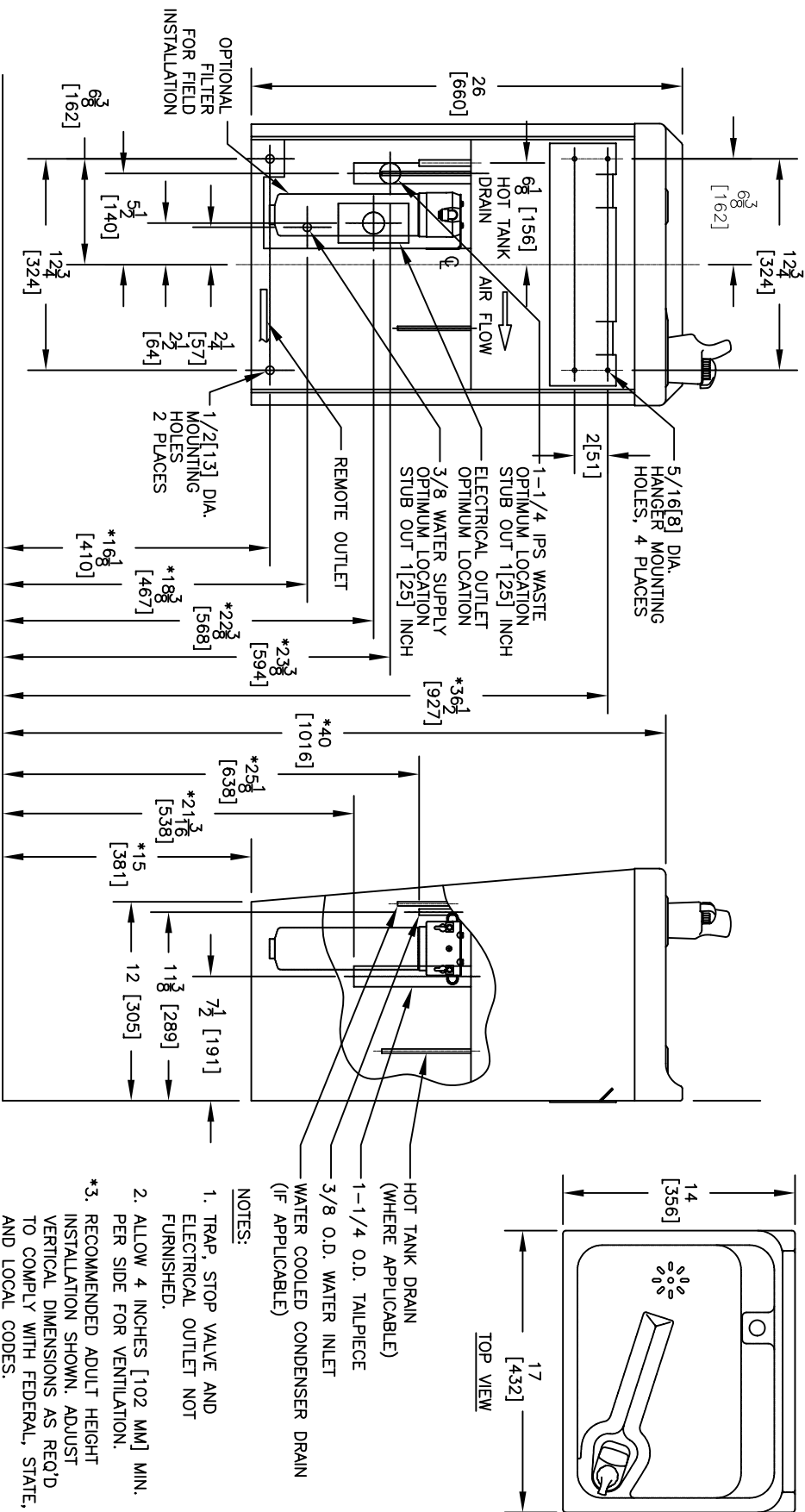


Options/Accessories: (Additional costs may apply)

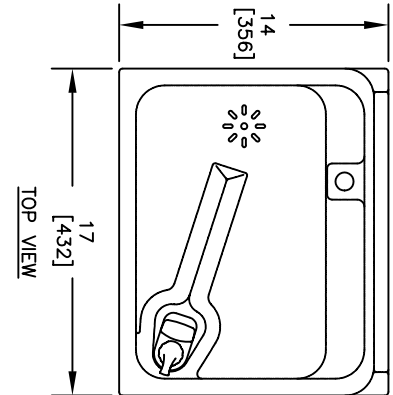
Discontinued Water Coolers: Model H3130, push lever operated, self-closing, polished chrome-plated brass, deck mounted, gooseneck cold water glassfiller faucet.

DISCLAIMER: Continued product improvements make specifications subject to change without notice. Check www.hawsco.com for the latest product information and updates.





- NOTES:
- TRAP, STOP VALVE AND ELECTRICAL OUTLET NOT FURNISHED.
 - ALLOW 4 INCHES [102 MM] MIN. PER SIDE FOR VENTILATION.
 - RECOMMENDED ADULT HEIGHT INSTALLATION SHOWN. ADJUST VERTICAL DIMENSIONS AS REQ'D TO COMPLY WITH FEDERAL, STATE, AND LOCAL CODES.
 - ALL DIMENSIONS ARE IN INCHES. DIMENSIONS IN BRACKETS [] ARE IN MILLIMETERS.



Haus corporation

INFO FAX : 1-888-FAX-HAUS (1-888-329-4297)

1455 Kleppe Ln, Sparks NV, 89431
 Phone: 775-359-4712 Fax: 775-359-7424
 Haus Ag Bockweg 3 CH-3401 Burgdorf Switzerland
 Haus Mfg Pte Ltd 74 Sungai Kadut Loop Singapore 729531
 e-mail: Haus@dwscoco.com website: www.hausco.com

FOR NO. 1	REVISED PER	DATE	BY
001	05	04/08	
APPROVED			

MODEL(S): WATER COOLER HW08

SCALE: 1:10 DRAWING TYPE:

PART NUMBER:	HW08
DRAWING NUMBER:	HW08
REV:	0
SIZE:	A
SHT:	1 OF 1