



Water Coolers



RADII™ MODULAR M8WREE

Suggested Specification

Shall deliver 8.0 gph of 50° F degree water at 90° F ambient and 80° F inlet water. Model M8WREE shall include infrared sensors to activate the flow of water. Fountains shall be designed to eliminate splashing and standing water. Bubbler shall have a flexible guard and operate between 20 and 120 psi. Chiller unit shall use R-134a refrigerant. Shall be Listed by Underwriters' Laboratories to U.S. and Canadian standards. Shall comply with ANSI 117.1 and ADA. Shall comply with the Safe Drinking Water Act and Lead Contamination Control Act. Shall comply with ANSI/NSF 61.

RADII™ Modular Water Cooler meets the needs of the physically challenged and the able-bodied.

Model

M8WREE A reflective light beam activates the fountain when the user approaches. No touching or pushing is needed. The system features a time delay to avoid unwanted activation and a shut off if the user does not move away in 30 seconds.

Standard Features

- > Built-in 100 micron strainer stops particles before they enter the waterway
- > Flexible bubbler guard
- > Brushed Stainless Steel Finish
- > Refrigerant R-134a
- > Product Certified to NSF/ANSI Standard 61, Annex G (AB1953)
- > Heavy duty galvanized steel wall mounting frame
- > High efficiency cooling system
- > Limited 5-Year Warranty

Finishes

- > Standard Finish: Stainless Steel
- > Optional Finish (at additional cost): Regency Bronze

Installation

- > Prior to roughing-in, consult local, state and federal codes for proper mounting height.
- > Wall mounting frame is furnished for easy installation

Options (at additional cost)

- > Stainless steel bubbler



ADA Compliant when installed in an alcove or with right and left wing walls.



Components in this fountain are lead free as defined by the Safe Drinking Water Act Amendments of 1986, and the Lead Contamination Control Act of 1988.

Limited 5-Year Warranty (Continental limits of the United States and Canada): Five years on the sealed refrigeration system and most component parts. Detailed warranty certificate enclosed with each water cooler; sample available upon request.

Export Warranty: One year on the sealed refrigeration system and most components parts. Four-year replacement contract on sealed refrigeration system. Detailed warranty certificate enclosed with each cooler; sample copy available upon request.

Product Certified to NSF/ANSI Standard 61, Annex G (weighted average lead content of $\leq 0.25\%$) and is in compliance with California's Health & Safety Code Section 116875 (commonly known as AB1953).

Models covered by this specification comply with all known Plumbing Codes. Listed by Underwriters' Laboratories to U.S. and Canadian standards and European Directives.



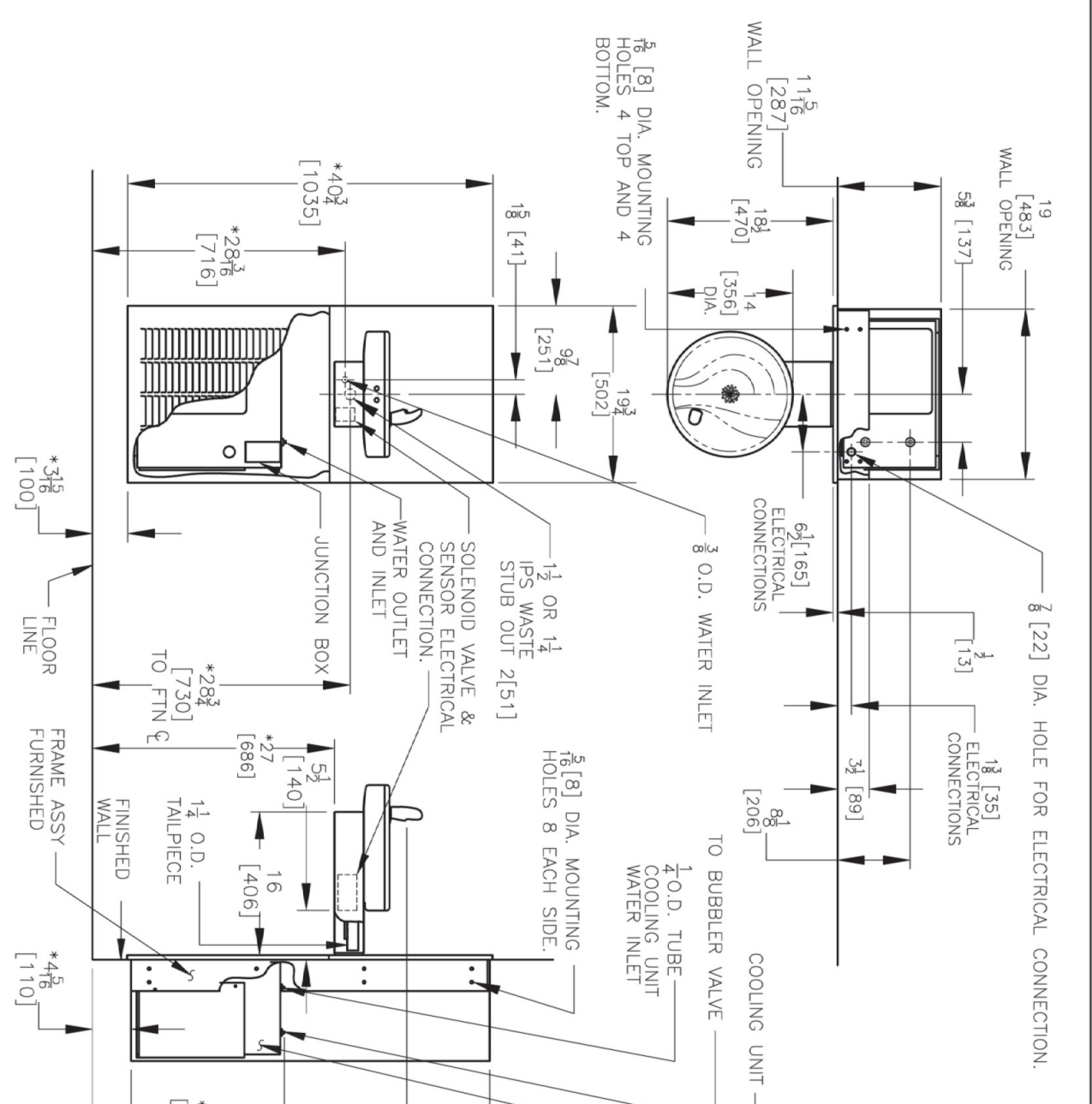
Certified to NSF/ANSI 61-G

| Model | 50° F Drinking Water 90° F Ambient Air Temp* | | | Hot 'N Cold™ Model | 115 Volts, 60 HZ | | | Glass Filler Acc. Option | Cabinet Color Finish | Net Wt. Approx. |
|--------|---|------------------|------------|-----------------------|------------------|-------------------|----------------|-----------------------------|-------------------------|--------------------|
| | Cooling Capacity GPH | Base Rate GPH | Pre-Cooler | | Compr. HP | Full Load Amps | Rated Watts | | | |
| M8WREE | 8.0 | 8.0 | No | No | 1/5 | 4.8 | 340 | No | Yes | 135 Lbs. |

*Industry Standard Rating Condition 80° F inlet water temperature.

Specifications subject to change without notice

OASIS™ RADII™ BARRIER-FREE MODULAR WATER COOLER MODEL M8WREE



NOTES:

- *1. RECOMMENDED ADULT HEIGHT INSTALLATION SHOWN. ADJUST VERTICAL DIMENSIONS AS REQUIRED TO COMPLY WITH FEDERAL, STATE AND LOCAL CODES.
2. STOP VALVE, TRAP, PIPE CONNECTOR TO WASTE WASTE LINE NOT PROVIDED.
3. ALL DIMENSIONS ARE IN INCHES. DIMENSIONS IN BRACKETS [] ARE IN MILLIMETERS.

| | |
|---|--|
|  <p>THIRD ANGLE PROJECTION</p> | <p>ROUGHING-IN AND DIMENSIONAL DRAWING</p> |
|---|--|