

# ELKAY<sup>®</sup>

## SPECIFICATIONS



### EZH2O™ In-Wall Recessed Bottle Filling Station with Soft Sides® (Filterless) Models EZWS-SS8K & EZWS-SS28K

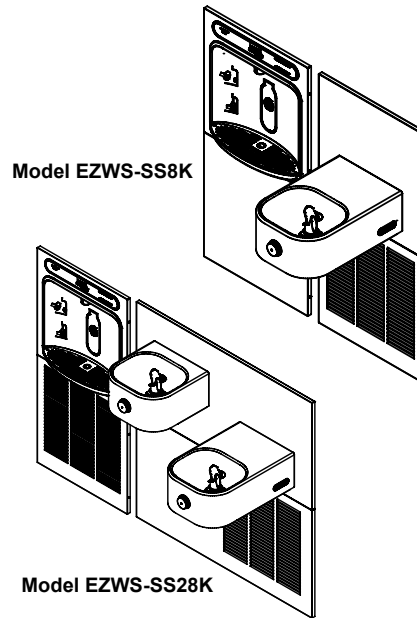
#### PRODUCT FEATURES

- Complete with EZH2O In-Wall and Soft Sides models including ECH8 chiller
- ADA compliant design
- Sanitary, no-touch, sensor activation with automatic 20 -second shut -off timer
- Bi-level models include two ECH8 chillers
- Silver ion anti-microbial protection
- Quick fill rate of 1.1 gpm
- Visual user interface display includes:
  - Green Ticker counts the quantity of plastic bottles saved from waste
- Includes mounting frame for quick and simple installation
- Hinged door for easy servicing

EZWS-SS models shall provide 8.0 gph of 50° F water at 90° F ambient and 80° inlet water. Bottle Filling station shall be recess design and constructed of 18 gauge Type 300 series stainless steel and ABS plastic. Shall include electronic sensor for no-touch activation with automatic 20-second shut-off timer. Shall provide 1.1 gpm flow rate with laminar flow to minimize splashing. Shall include anti-microbial protected plastic components. Fountain constructed of stainless steel with chilling system. Shall meet ADA guidelines when properly installed. Shall be lead-free design which meets Safe Drinking Water Act and certified to NSF/ANSI 61 and California AB1953. Unit shall be certified to UL399 and CAN/CSA 22.2 No. 120.

#### SUGGESTED SPECIFICATION

#### IMAGES



- 36292C Receptacle Adaptor Plug

#### OPTIONAL ACCESSORIES

- Educational facilities
- Healthcare facilities
- Sport and fitness centers
- Airports
- Office buildings
- Other commercial buildings

#### APPLICATIONS

2222 Camden Court Phone: 630572-3192  
Oak Brook, IL 60523 Web: Elkayusa.com



#### Third Party Certified to:

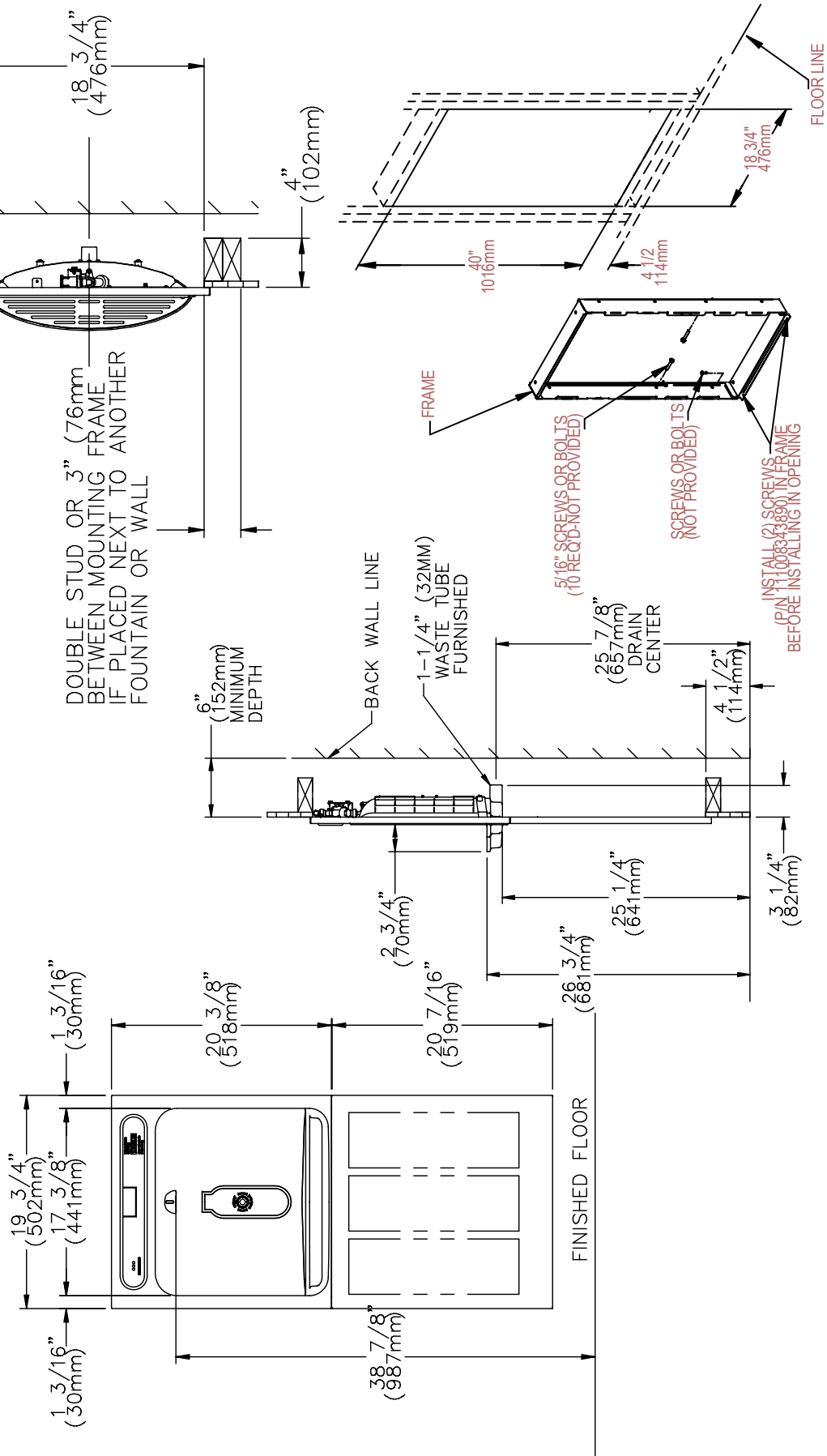
- UL399 and CAN/CSA 22.2 No. 120
- Lead-free compliance including NSF/ANSI 61 and CA AB1953

# ELKAY®

## ROUGH-IN DIMENSIONS

Rated for Indoor Use Only

## EZH2O In-Wall Non-Refrigerated



Job Name: \_\_\_\_\_ Qty: \_\_\_\_\_

Contact Info (Name, Phone, Email): \_\_\_\_\_

Approval for Manufacture — Signature and Date: \_\_\_\_\_

Comments: \_\_\_\_\_

Specifications and measurements are subject to change without notification. Please visit [elkayusa.com](http://elkayusa.com) for most current version.

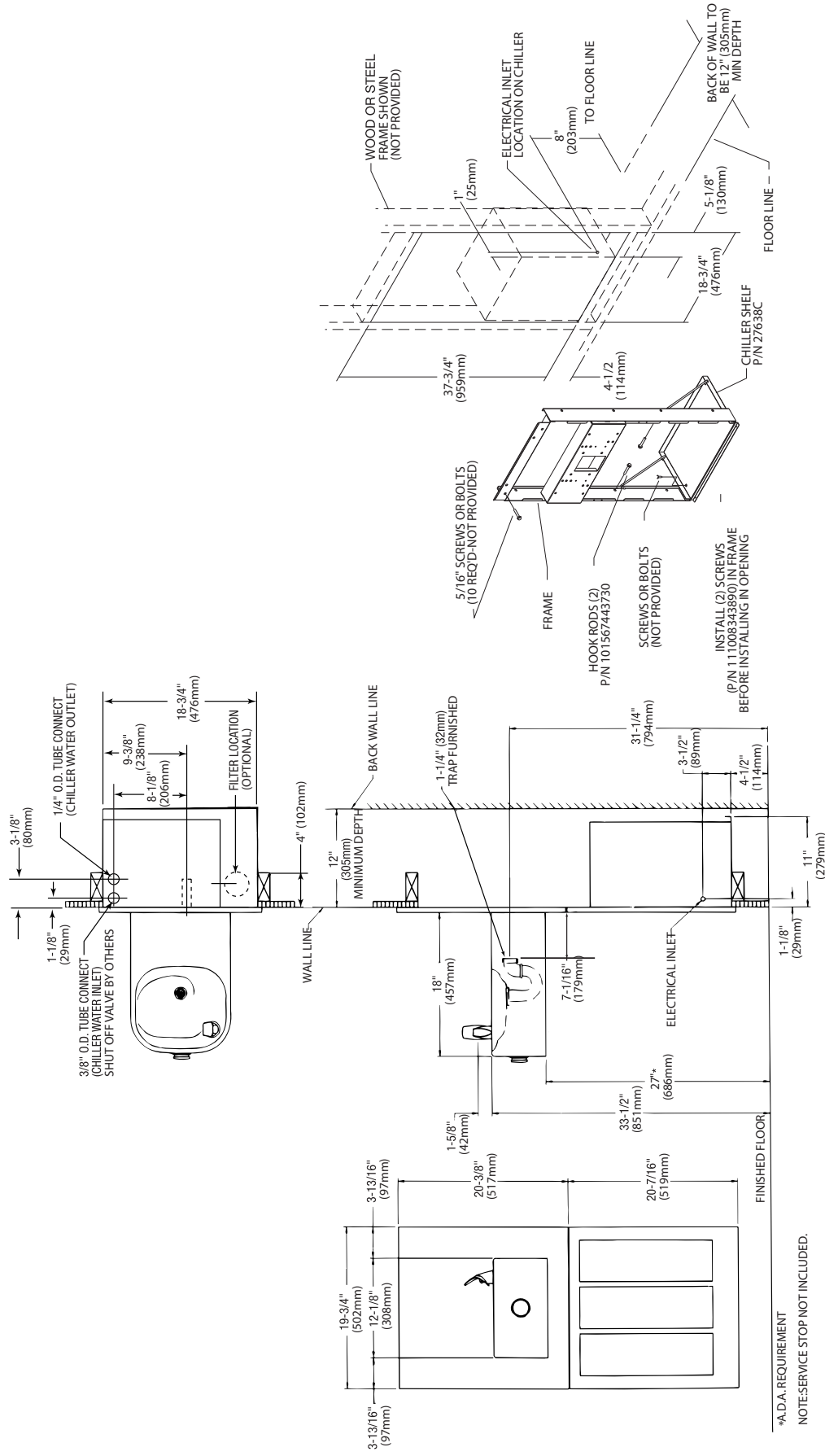
2222 Camden Court  
Oak Brook, IL 60523  
Phone: 630-572-3192  
Web: [Elkayusa.com](http://Elkayusa.com)

# ELKAY®

## ROUGH-IN DIMENSIONS

Rated for Indoor Use Only

Single Soft Sides Refrigerated



\*A.D.A. REQUIREMENT  
NOTE: SERVICE STOP NOT INCLUDED.

Job Name: \_\_\_\_\_ Qty: \_\_\_\_\_

Contact Info (Name, Phone, Email): \_\_\_\_\_

Approval for Manufacture — Signature and Date: \_\_\_\_\_

Comments: \_\_\_\_\_

Specifications and measurements are subject to change without notification.  
Please visit [elkayusa.com](http://elkayusa.com) for most current version.

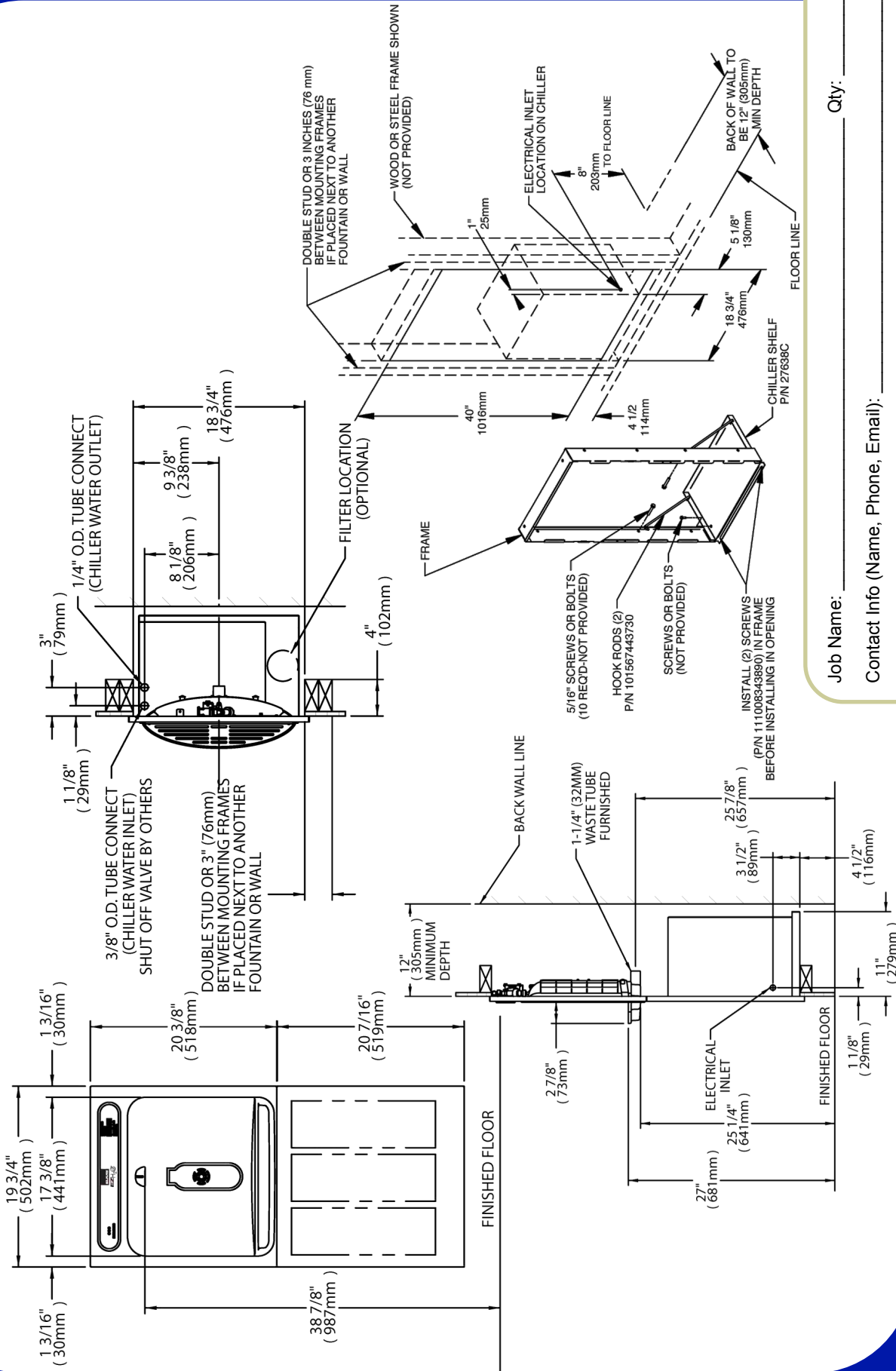
2222 Camden Court  
Oak Brook, IL 60523  
Phone: 630-572-3192  
Web: [Elkayusa.com](http://Elkayusa.com)

# ELKAY®

## ROUGH-IN DIMENSIONS

Rated for Indoor Use Only

## EZH2O In-Wall Refrigerated



Job Name: \_\_\_\_\_ Qty: \_\_\_\_\_

Contact Info (Name, Phone, Email): \_\_\_\_\_

Approval for Manufacture—Signature and Date: \_\_\_\_\_

Comments: \_\_\_\_\_

2222 Camden Court  
Oak Brook, IL 60523  
Phone: 630-572-3192  
Web: Elkayusa.com

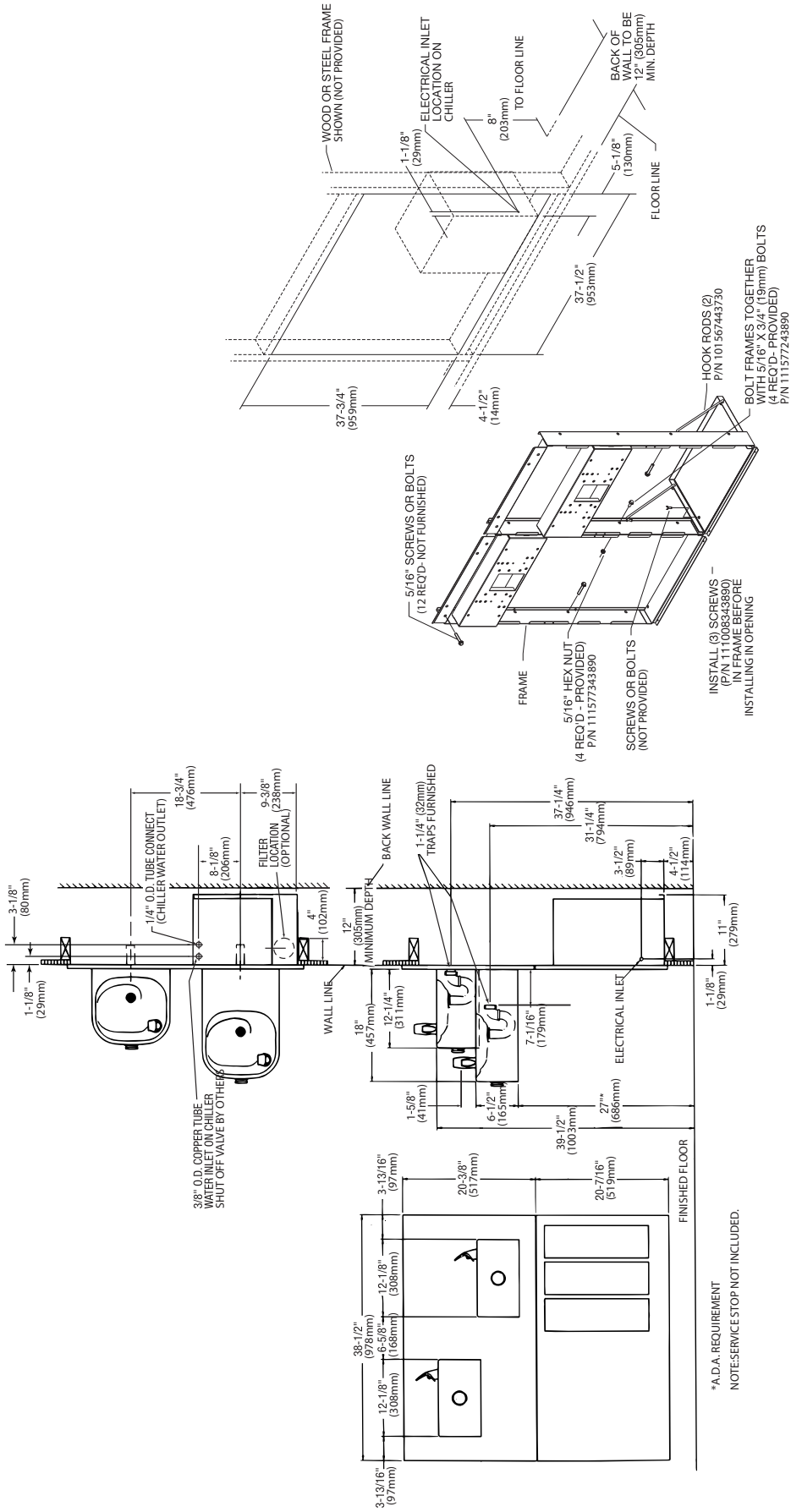
Specifications and measurements are subject to change without notification.  
Please visit [elkayusa.com](http://elkayusa.com) for most current version.

# ELKAY®

## ROUGH-IN DIMENSIONS

Rated for Indoor Use Only

## Bi-Level Soft Sides Refrigerated



\*A.D.A. REQUIREMENT  
NOTES: SERVICE STOP NOT INCLUDED.

Job Name: \_\_\_\_\_ Qty: \_\_\_\_\_

Contact Info (Name, Phone, Email): \_\_\_\_\_

Approval for Manufacture — Signature and Date: \_\_\_\_\_

Comments: \_\_\_\_\_

2222 Camden Court  
Oak Brook, IL 60523  
Phone: 630-572-3192  
Web: Elkayusa.com

Specifications and measurements are subject to change without notification.  
Please visit [elkayusa.com](http://elkayusa.com) for most current version.