

ELKAY® SPECIFICATIONS

Wall-Mount Outdoor Tubular Bottle Filling Station Model LK4405BF

GENERAL

Pedestal steel bottle filler with textured power coat finish and E-Coat immersion for year-round beauty with minimum maintenance. The E-Coat immersion process coats the outside and inside of the unit for the ultimate in corrosion protection.

Designed to be easily accessible to both physically challenged and able-bodied individuals. Ideally suited for installation in public areas. Model meets state and federal requirements as defined by the Americans with Disabilities Act.

NO LEAD DESIGN

This fountain is certified by WQA to lead-free compliance including **NSF/ANSI 61-ANNEX G, AB 1953**.

This model complies with the lead-free definition in the Safe Drinking Water Act of 1986 and Lead Contamination Act of 1988.

CONSTRUCTION

Bottle Filler: Heavy-duty steel construction with rounded design. Laminar flow minimizes splash and allows easy maintenance. Quick fill rate at 1 gallon per minute.

Pushbutton Actuation Mechanism: Self-closing, vandal-resistant pushbutton does not require grasping or twisting.

Inlet Strainer: Easily cleaned in-line strainer screen traps particles of 140 microns or larger before they enter the waterway.

Access Panel: Manufactured of heavy-gauge steel with vandal-resistant screws. Provides access for easy hook-up of all plumbing connections.



Model LK4405BF



This model is ADA compliant when properly installed.

SUGGESTED SPECIFICATIONS

Unit shall be of tubular steel construction. Shall include single bottle filler unit with laminar flow and front pushbutton activation. Shall comply with ADA guidelines and be certified to lead-free compliance including NSF/ANSI 61, CA 1953 and the Safe Drinking Water Act.

Shipping Weight: 91 lbs.

In keeping with our policy of continuing product improvement, Elkay reserves the right to change product specifications without notice.

This specification describes an Elkay product with design, quality and functional benefits to the user. When making a comparison of other producers' offerings, be certain these features are not overlooked.

**Outdoor Tubular Wall Mount
Bottle Filling Station
Model LK4405BF**

ELKAY®
ROUGH-IN DIMENSIONS

MOUNTING INSTRUCTIONS

Refer to diagrams for rough-in of plumbing. This fountain is to be mounted on a smooth, flat finished wall surface with adequate support structure. NOTE: Wall mounting structure must be capable of support 300 lb. load on fountain. To secure unit, use 3/8" minimum screws or anchor bolts (not provided).

Water supply 3/8" O.D. unplated copper tube. Waste 1-1/4" IPS.

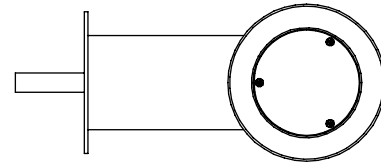
Installation requires trap to be installed in wall. A service supply stop must be installed at the fountain inlet line. Trap and service stop not included.

CAUTION — Unit must be securely bolted to wall.

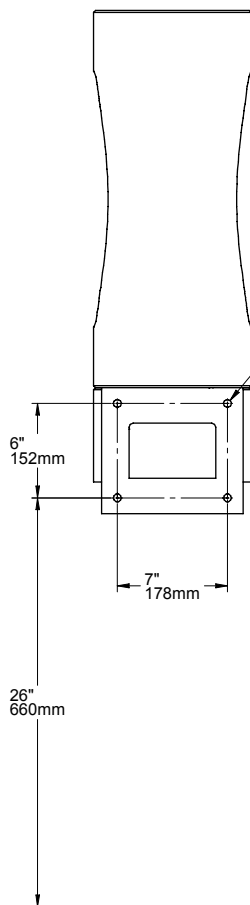
Operating Pressures: Supply water: 20-105 psi maximum.

NOTE: For wall support required locations see installation instructions provided with fountain.

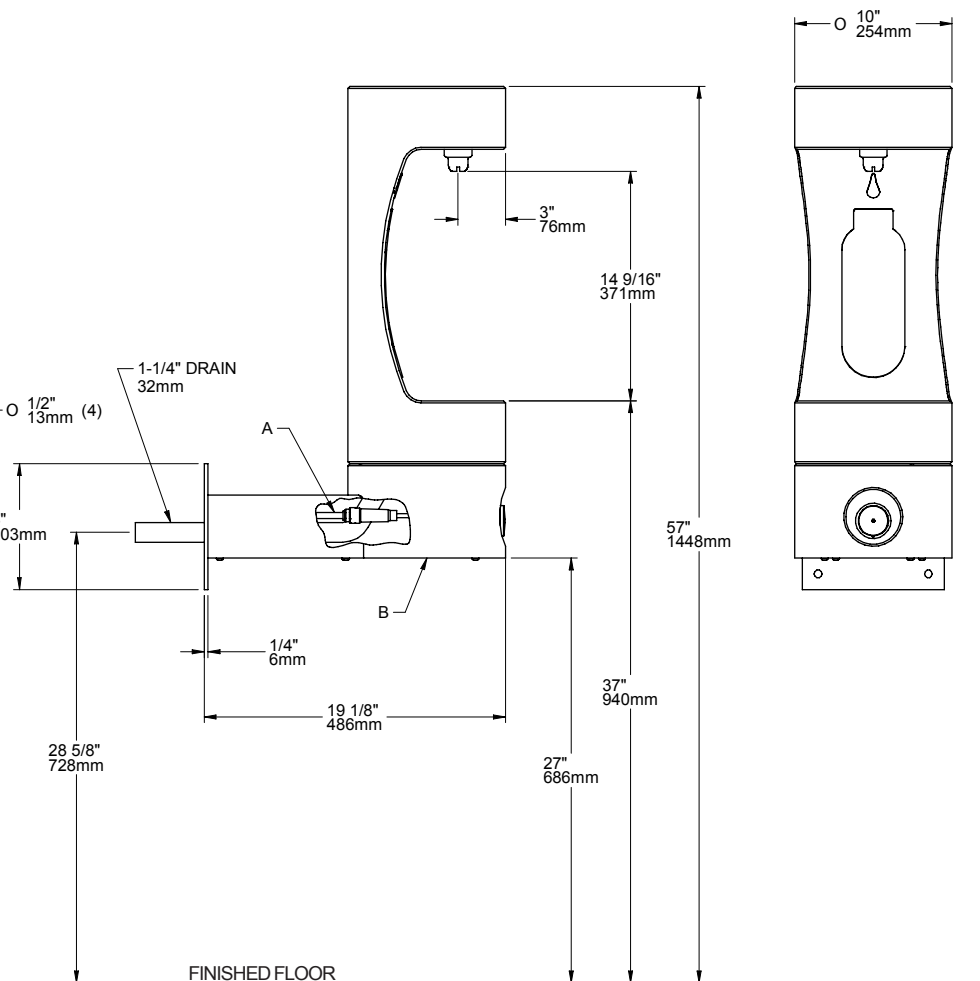
TOP VIEW



FRONT VIEW



BACK VIEW



LEGEND

A = 3/8" O.D. UNPLATED COPPER TUBE CONNECT - SHUT OFF VALVE BY OTHERS

B = REMOVABLE BOTTOM COVER