

With FLEXI-GUARD®
Installation, Care & Use Manual

USES HFC-134A REFRIGERANT

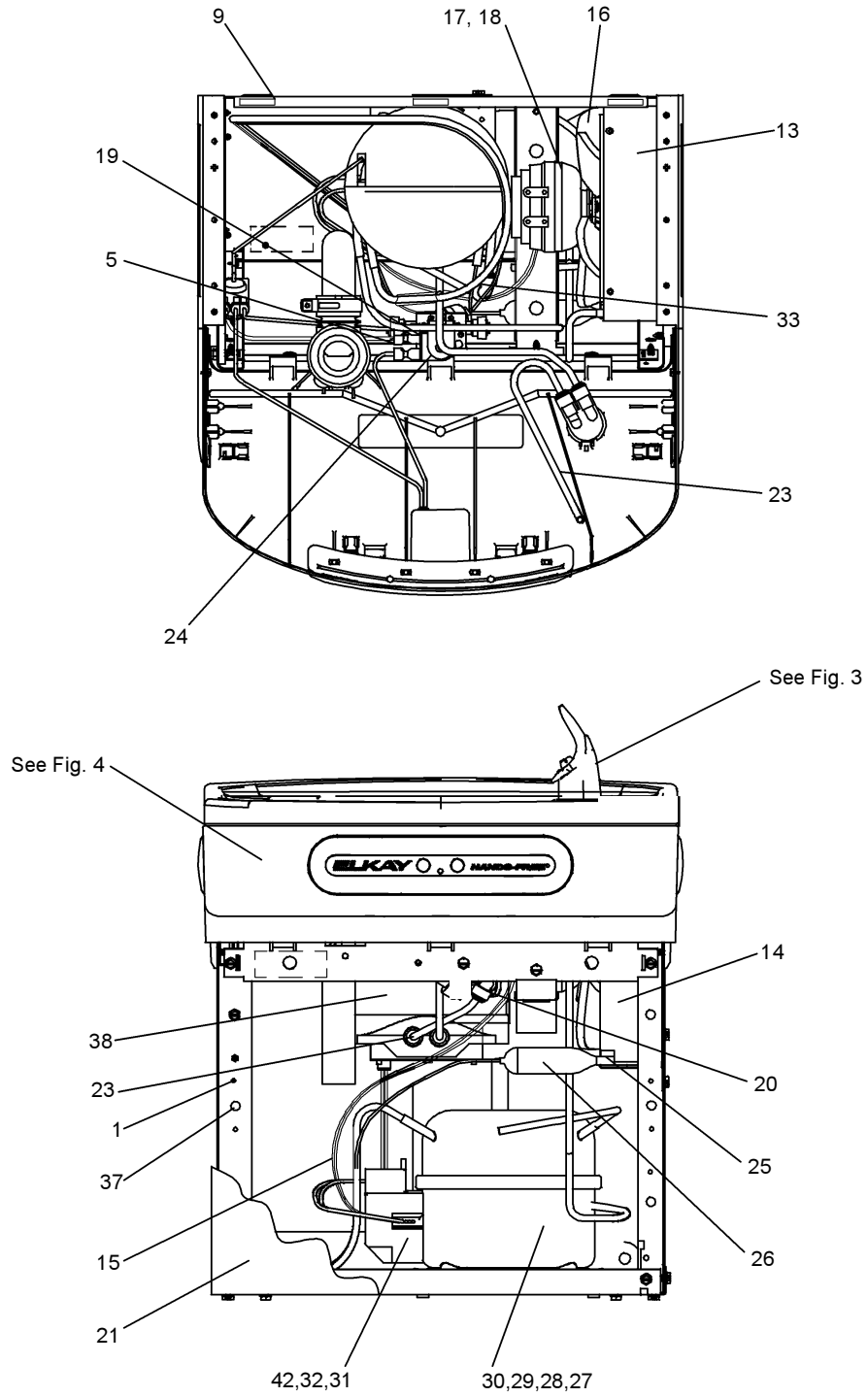
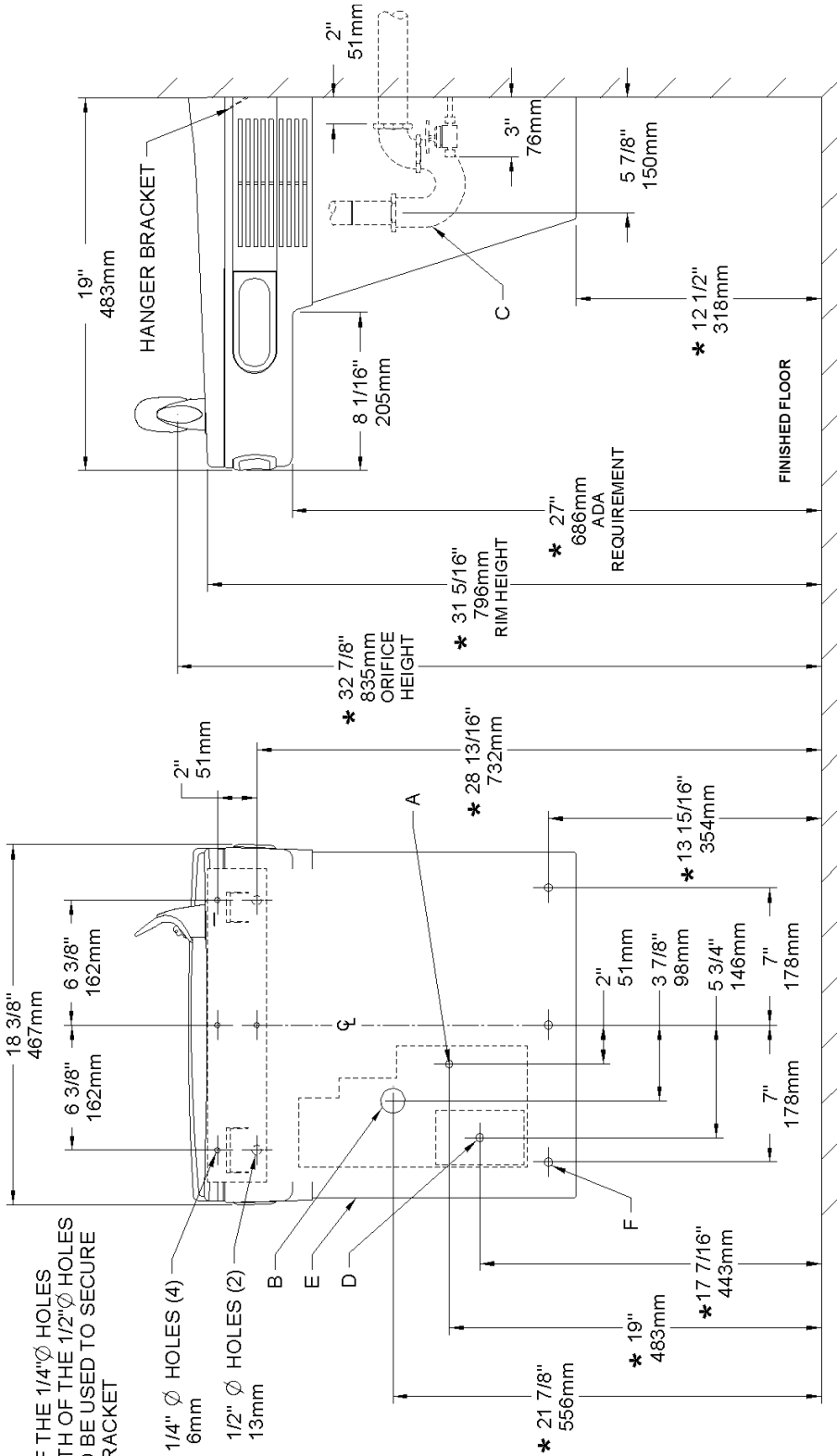


FIG.1



NOTE:
ALL 4 OF THE 1/4"Ø HOLES
AND BOTH OF THE 1/2"Ø HOLES
SHOULD BE USED TO SECURE
WALL BRACKET

* REDUCE HEIGHT BY 3 INCHES FOR INSTALLATION OF CHILDRENS ADA COOLER.

LEGEND/LEYENDA/LÉGENDE

- A = RECOMMENDED WATER SUPPLY LOCATION 3/8 O.D. UNPLATED COPPER TUBE CONNECT STUB WITH SHUT OFF (BY OTHERS) 3 IN. (76mm) MAXIMUM OUT FROM WALL
La UBICACION 3/8" O RECOMENDADA de ABASTECIMIENTO DE AGUA. D. EL TUBO del COBRE de UNPLATED CONECTA TALONARIO CON APAGO (POR OTROS) 3 en. (76 mm) el MAXIMO FUERA DE PARED
L.O.D de 3/8" d'EMPLACEMENT DE PROVISION D'EAU RECOMMANDE. LE TUBE DE CUIVRE DE UNPLATED CONECTE STUB AVEC ETEINT (PAR LES AUTRES) 3 dans. (76 mm) le MAXIMUM HORS DU MUR
- B = RECOMMENDED LOCATION FOR WASTE OUTLET 1-1/4" O.D. DRAIN STUB 2 IN. OUT FROM WALL
UBICACION RECOMENDADA PARA EL DRENAJE DE SALIDA DE AGUA, DE 1 1/4" DE DIAMETRO. EIT ALONARIO 2 FUERA DE PARED
EMPLACEMENT RECOMMANDE POUR LE DRAIN DE D.E. 1-1/4" DE SORTIE D'EAU. STUB 2 HORS DU MUR
- C = 1-1/4" TRAP NOT FURNISHED
PURGADOR DE 1 1/4" NO PROPORCIONADO
SIPHON 1-1/4" NON FOURNI
- D = ELECTRICAL SUPPLY (3) WIRE RECESSED BOX
CAJA RECESIVA DE ALAMBRES (3) DE SUMINISTRO ELÉCTRICO
BOÎTE ENCASTRÉE D'ALIMENTATION ÉLECTRIQUE (3) FILS
- E = INSURE PROPER VENTILATION BY MAINTAINING 6" (152 mm) (MIN.) CLEARANCE FROM CABINET LOUVERS TO WALL.
ASEGURE UNA VENTILACION ADECUADA MANTENIENDO UN ESPACIO E 6" (152 mm) (MIN.) DE HOLFUR A ENTRE LA REJILLA DE VENTILACIÓN DEL MUEBLE Y LA PARED
ASSUREZ-VOUS UNE BONNE VENTILATION EN GARDANT 6" (152 mm) (MIN.) ENTRE LES ÉVENTS DE L'ENCEINTE ET LE MUR.
- F = 7/16 BOLT HOLES FOR FASTENING UNIT TO WALL
AGUJEROS DE LAS TUERCAS DE 7/16 PARA SUJETAR LA UNIDAD A LA PARED
TROUS D'ÉCROUS 7/16 POUR FIXER L'APPAREIL AU MUR

FIG. 2

HANGER BRACKETS & TRAP INSTALLATION

- 1) Remove hanger bracket fastened to back of cooler by removing one (1) screw.
- 2) Mount the hanger bracket as shown in Figure 2.

NOTE: Hanger Bracket **MUST** be supported securely. Add fixture support carrier if wall will not provide adequate support. Anchor hanger securely to wall using all six (6) 1/4 in. dia. mounting holes.

IMPORTANT:

- 5-7/8 in. (150mm) dimension from wall to centerline of trap must be maintained for proper fit.

INSTALLATION OF COOLER

- 3) Hang the cooler on the hanger bracket. Be certain the hanger bracket is engaged properly in the slots on the cooler back as shown in Figure 2.
- 4) Remove the six (6) screws holding the lower front panel at the bottom of cooler. Remove the front panel by pulling straight down and set aside.
- 5) Connect water inlet line--See Note 4 of General Instructions.
- 6) Install trap. Remove the slip nut and gasket from the trap and install them on the cooler waste line making sure that the end of the waste line fits into the trap. Assemble the slip nut and gasket to the trap and tighten securely.

IMPORTANT: If it is necessary to cut the drain, loosen the screw at the black rubber boot and remove tube, check for leaks after re-assembly.

- 7) Plug in electrical power.

START UP

Also See General Instructions

- 8) Stream height is factory set at 35 PSI. If supply pressure varies greatly from this, adjust screw located on the right knee clearance area. CW adjustment will raise stream and CCW adjustment will lower stream. For best adjustment, stream should hit basin approximately 6-1/2" (165mm) from bubbler on the downward slope of the basin.

NOTE: If continuous flow occurs at the end of the compressor cycle, turn cold control (Item 37) counterclockwise 1/4 turn.

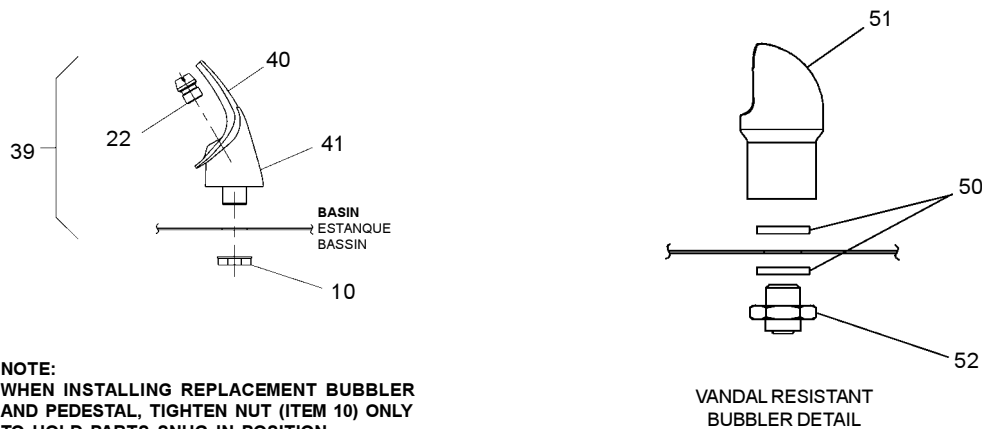
- 9) Replace the front panel ensuring that the metal wrapper is secured inside of the upper shroud. Replace all six screws previously removed.

SENSOR RANGE ADJUSTMENT: The electronic sensor used in this cooler is factory pre-set for a "visual" range of 36 inches (914 mm). If actual range varies greatly from this or a different setting is desired, follow the range adjustment procedure below:

- A. Disassemble the unit.
- B. Using a small tip screwdriver, rotate range adjustment screw clockwise to increase range and counterclockwise to decrease range (See Fig. 4).
- CAUTION:** Complete range of sensor (24-28 inches/610-711mm) is only one turn of the adjusting screw.
- C. Re-assemble the unit.

SENSOR CONTROL: If sensor fails to operate valve mechanism or operates erratically, check the following.

- A. Ensure there are no obstructions within a 40 inch (1016mm) radius in front of cooler.
- B. Check wire connections at the solenoid valve and sensor. **CAUTION:** Make sure unit is unplugged before checking any wiring.
- C. Ensure proper operation of solenoid valve. If there is an audible clicking sound yet no water flows, look for an obstruction in the valve itself or elsewhere in the water supply line.



NOTE:
WHEN INSTALLING REPLACEMENT BUBBLER
AND PEDESTAL, TIGHTEN NUT (ITEM 10) ONLY
TO HOLD PARTS SNUG IN POSITION.
DO NOT OVER TIGHTEN.

FIG.3

PARTS LIST/ LISTA DE PIEZAS/ LISTE DES PIÈCES

| ITEM NO | PART NO | DESCRIPTION |
|---------|--------------|---------------------------------|
| 1 | 111411443890 | Screw - #8-36 x .38 Tri-Lobed |
| 2 | 56005C | Shroud - Upper |
| 3 | 31516C | Sensor - Clear |
| 4 | 38417001 | Screw - #10 x .37 PHTC |
| 5 | 36004C | Wire - Jumper |
| 6 | 56079C | Pushbar - Front |
| 7 | 56074C | Pushbar - Side |
| 8 | 56071C | Drain |
| 9 | 50129C | Bumper - Press Bar |
| 10 | 70012C | Nut - Lock 3/8 x 18 |
| 11 | 61314C | Regulator |
| 12 | 50986C | Holder - Regulator |
| 13 | 27846C | Shroud - Fan Top |
| 14 | 27847C | Shroud - Fan Bottom |
| 15 | 35978C | Power Cord |
| 16 | 30664C | Fan Blade |
| 17 | 70018C | Hex Nut - Fan Blade |
| 18 | 31490C | Fan Motor |
| 19 | 33133000 | Adapt - Tab .250 |
| 20 | 75583C | Elbow - John Guest |
| 21 | 27416C | Wrapper - Stainless |
| | 27413C | Wrapper - Light Gray |
| 22 | 40322C | Orifice Assy |
| 23 | 56092C | Poly Tubing 48" (Cut to length) |
| 24 | 35981C | Valve - Solenoid |
| 25 | 66604C | Condenser |
| 26 | 66202C | Drier |
| 27 | 101516143550 | Stud - Compressor Mtg. |
| 28 | 100806740570 | Grommet - Compressor Mtg. |
| 29 | 19037000 | Clip - Compressor Mtg. |
| 30* | 36086C | Compressor Serv. Pak EMI70HER |
| 31 | 36084C | Relay |
| 32 | 35768C | Cover - Relay |
| 33 | 66576C | Heat Exchanger |
| 34 | 66575C | Drain Tube |
| 35 | 75584C | Clamp - Drain |
| 36 | 55001109 | Basin - Stainless Steel |
| 37 | 31513C | Cold Control |
| 38 | 66534C | Evaporator Assembly |
| 39 | 56073C | Bubbler Assy |
| 40 | 56011C | Housing Assembly |
| 41 | 55997C | Pedestal |
| 42 | 36083C | Overload |
| 43 | 27965C | Hanger Bracket (Not Shown) |
| 44 | 75532C | Screw - #10-16 x 63 THSM |
| 45 | 56082C | Nut - Regulator |
| 46 | 100322740560 | Gasket - Black .68 x 1.03 |
| 47 | 45392C | Body - Bubbler |
| 48 | 15008C | Nipple - Bubbler |

*REPLACE WITH SAME COMPRESSOR USED IN ORIGINAL ASSEMBLY.
 NOTE: All correspondence pertaining to any of the above water coolers or orders for repair parts MUST include Model No. and Serial No. of cooler, name and part number of replacement part.

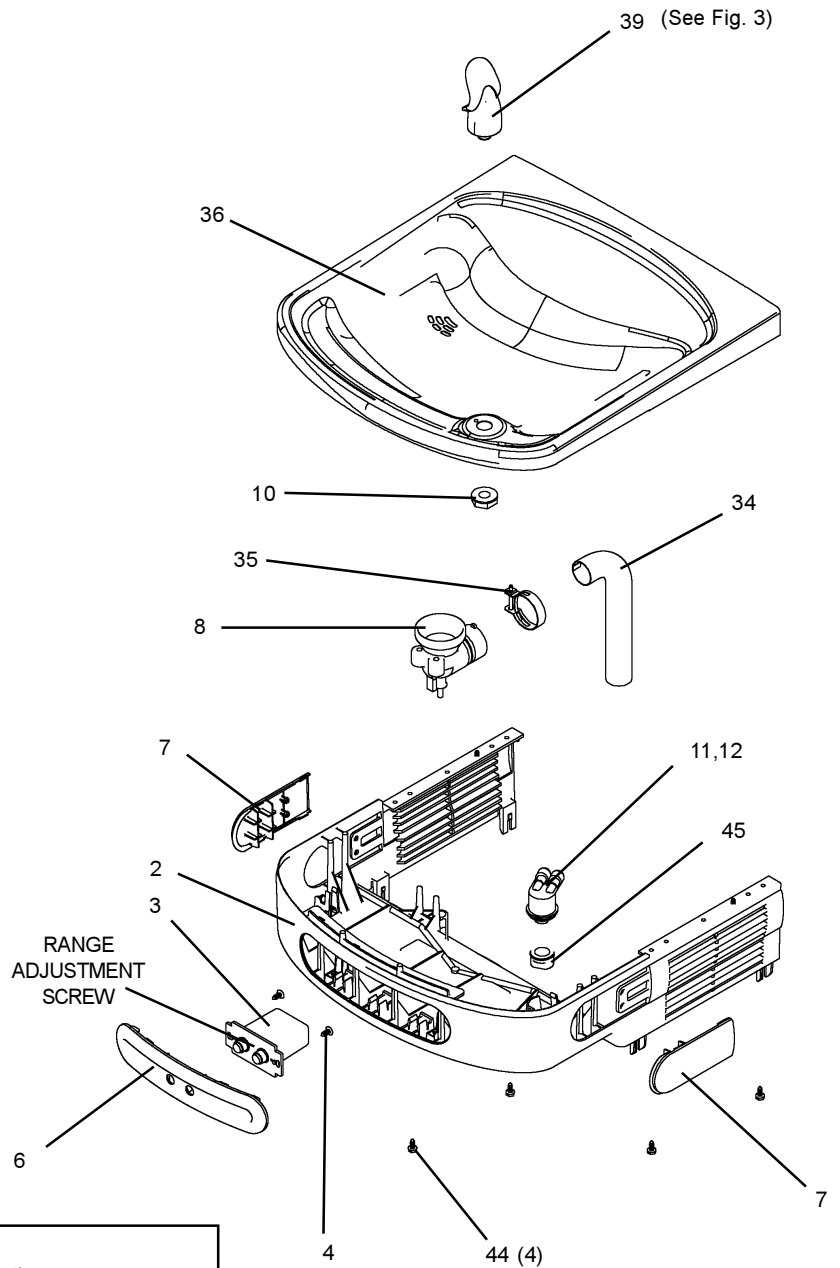


FIG4

