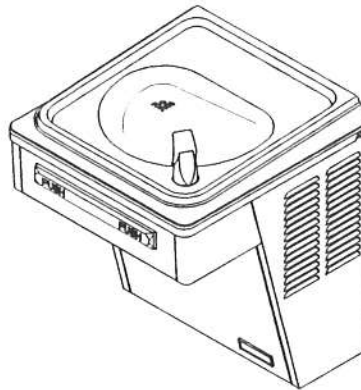


Installation, Care & Use Manual

Models: EBFA4/8*1A, EBFSA4/8*1A, EBFSA8*2A
LIEA8*1A, LISEA8*1A, TBFA4/8*1A, TBFSA4/8*1A, TISEA8*1A
USES HFC-134A REFRIGERANT



Installer

These series coolers are among the easiest to install Barrier-Free Models on the market today. To assure you install this model easily and correctly, **PLEASE READ THESE SIMPLE INSTRUCTIONS BEFORE STARTING THE INSTALLATION. CHECK YOUR INSTALLATION FOR COMPLIANCE WITH PLUMBING, ELECTRICAL AND OTHER APPLICABLE CODES.** After installation, leave these instructions inside the cooler for future reference.

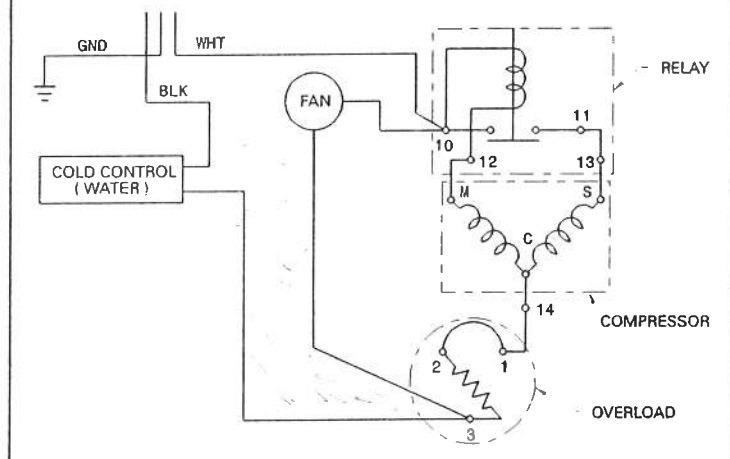
IMPORTANT

ALL SERVICE TO BE PERFORMED BY AN AUTHORIZED SERVICE PERSON

1. Insure proper ventilation by maintaining 6" (min.) clearance from cabinet louvers to wall on each side of cooler.
2. Water supply 3/8" IPS. Waste 1-1/4" IPS. Contractor to supply waste trap and service stop valve in accordance with local codes. (See Page 2, Fig. 2)
3. Connecting lines should be thoroughly flushed to remove all foreign matter before being connected to cooler. This cooler is manufactured in such a manner that it does not in any way cause taste, odor, color or sediment problems.
4. Electrical: Insure power supply is identical in voltage, cycle and phase to that specified on the cooler data plate. NEVER wire compressor directly to the power supply.
5. See TROUBLE SHOOTING AND MAINTENANCE GUIDE page 4 for care of Bronzetone Models.
6. These products are designed to operate on 20 to 105 psig supply line pressure. If inlet pressure is above 105 psig, a pressure regulator must be installed in supply line. Any damage caused by reason of connecting this product to supply line pressures lower than 20 psig or higher than 105 psig is not covered by warranty.

WIRING DIAGRAM

This drawing is merely for illustrating the components of the electrical system.



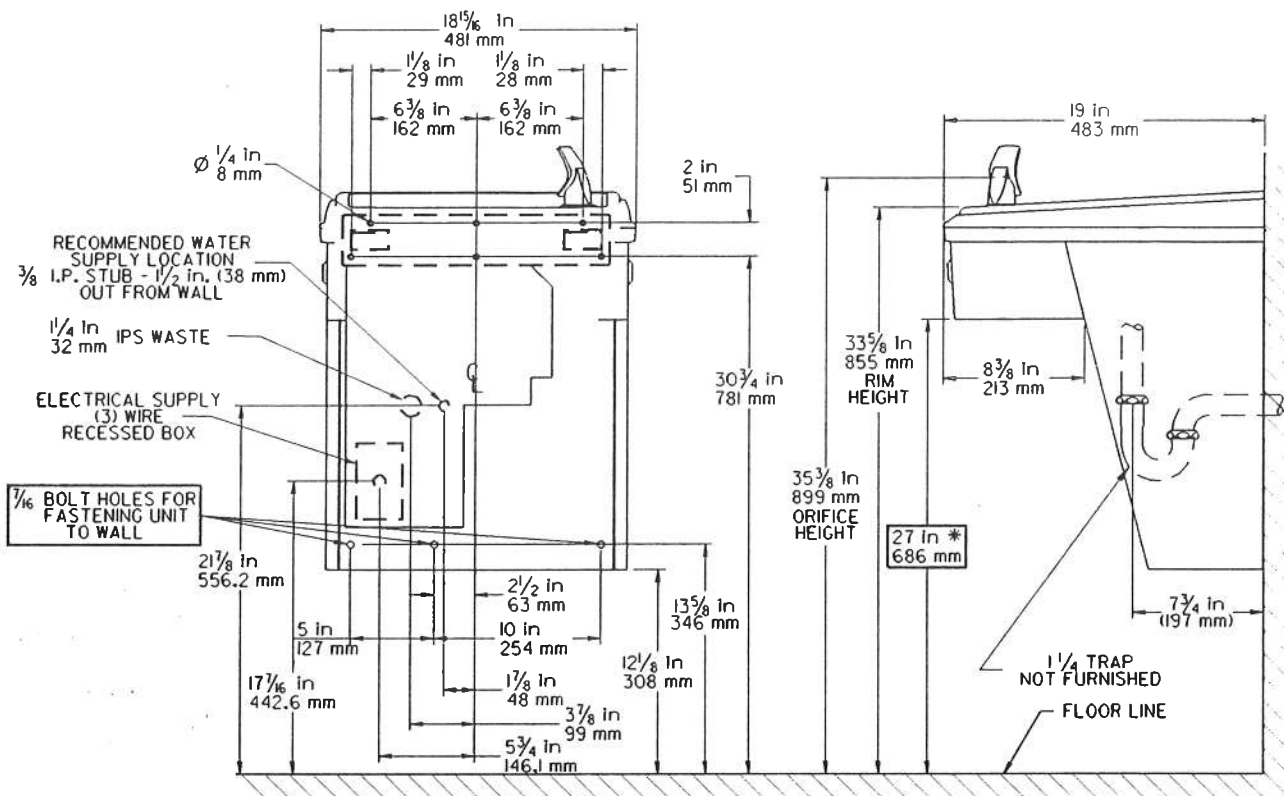


FIG. 1

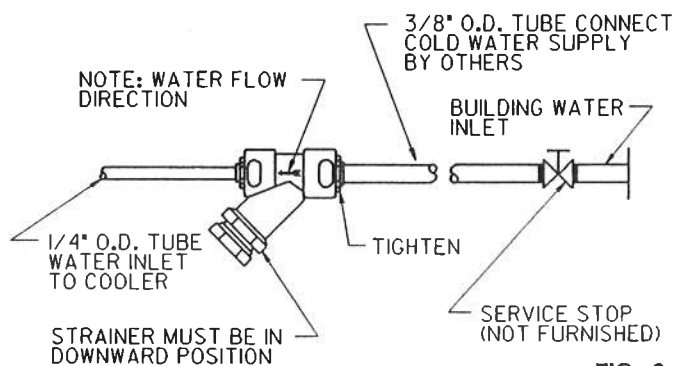


FIG. 2

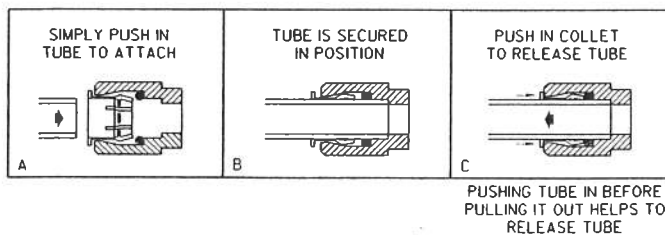


FIG. 3

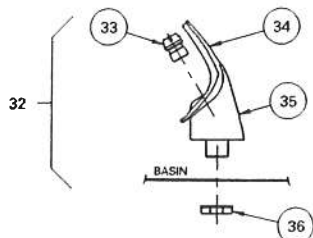


FIG. 4

HANGER BRACKETS & TRAP INSTALLATION

1. Remove hanger brackets fastened to back of cooler by removing one (1) screw from bracket.
 2. Mount the hanger brackets and trap.
NOTE: Hanger Brackets **MUST** be supported securely. Add fixture support carrier if wall will not provide adequate support.
- IMPORTANT:**
- 7 3/4 in. dimension from wall to centerline of trap must be maintained for proper fit.
 - Anchor hangers securely to wall using all six (6) 1/4 in. dia. mounting holes.
3. Install 3/8" IPS. female x 3/8" compression straight service stop to the building water inlet stub.

INSTALLATION OF COOLER

4. Hang the coolers on the hanger brackets. Be certain the hanger bracket is engaged properly in the slots of each cooler back.
5. Loosen the two (2) screws holding the lower front panel at the bottom of cooler base and two (2) screws at the top. Remove the front panels and set aside.
6. Install a 3/8" O.D. water line between the service stop valve and cooler. Remove burr from outside of water line. Remove Y-strainer which is taped to the water inlet tube on cooler. Loosen nut on inlet side of Y-strainer and insert 3/8" O.D. water line to positive stop approx. 3/4 inch. Finger tighten nut to lock tubing in place (see Fig. 2 and Fig. 3).
NOTE: Y-Strainer is not used on units with filter, simply insert 3/8" water inlet into fitting on filter head until a positive stop is reached approximately 3/4" (See Fig. 2).

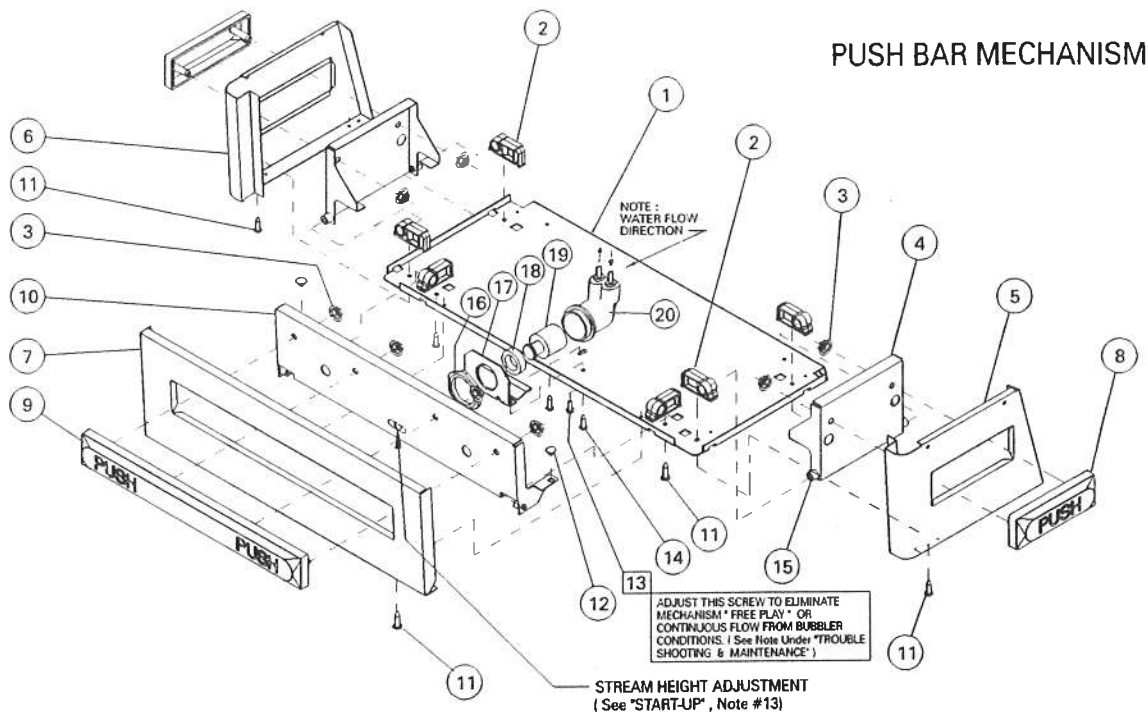


FIG. 5

- 7). Insert 1/4" O.D. water line from cooler to positive stop as noted in Note #6 (above).
NOTE: If required, the 1/4" O.D. water inlet line to cooler may be cut to desired length. However, if water line is cut, all burrs must be removed from outside of tube before inserting into the Y-strainer.
- 8). Remove the slip nut and gasket from the trap and install them on the cooler waste line making sure that the end of the waste line fits into the trap. Assembly the slip nut and gasket to the trap and tighten securely.

START UP

- 10). Turn on the building water supply and check all connections for leaks.
- 11). Depress push bars until all air is bled from cooler water system. A steady stream flow assures all air removed.
- 12). Stream height is factory set at 35 PSI. If supply pressure varies greatly from this, adjust screw, accessible by removing front push panel (Item 7, Fig. 5). CW adjustment will raise stream and CCW adjustment will lower stream. For best adjustment, stream should hit basin approximately 6-1/2" from bubbler.
- 13). Recheck all water and drain connections with water flowing through system.
- 14). Rotate fan to insure proper clearance and free fan action.
- 15). Plug cooler power cord into building electrical receptacle.
- 16). Replace the front panel and secure by re-tightening four (4) screws on each unit.
- 17). Water Valve Mechanism - ADJUSTMENT PROCEDURE:
 - Turn adjustment screw (Item # 13) "Counter-Clockwise" until water flow from bubbler starts.
 - Turn adjustment screw "Clockwise" until water flow stops, THEN turn an additional 1/2 turn.

NOTE: Adjustments stated above are as viewed from underneath unit (bottom side of dispenser panel Page 3, Fig 4, Item No. 1).

PARTS LIST - PUSH BAR MECHANISM

ITEM NO.	PART NO.	DESCRIPTION
1	22897C	Panel - Bottom Dispenser
2	51531C	Block - Pivot
3	11-14117-43-620	Nut - 1/4, Self-Threading
4	22901C	Bracket - Side Push
5	See Color Table	Panel - Right Side
6	See Color Table	Panel - Left Side
7	See Color Table	Panel - Front Side
8	51563C	Bar - Push Side
	51564C	Bar - Push Side Bronzestone
9	51557C	Bar - Push Front
	51558C	Bar - Push Front Bronzestone
10	22900C	Bracket - Front Push
11	70864C	Screw - #8 x 5/8" Lg. TSPH
12	51667C	Bumper - Press Bar
13	70935C	Screw - Shoulder
14	11-26275-43-890	Screw - Regulator Mounting
15	50212C	Rivet - Drive Type
16	40045C	Hex - Nut
17	23003C	Bracket - Regulator Mounting
18	10031C	Retaining - Nut
19	61314C	Regulator
20	50985C	Holder - Regulator

COLOR TABLE

PANEL COLOR	Item No. 5 Part No. (w/o hole)	Item No. 5 Part No. (with hole)	Item No. 6 Part No. (w/o hole)	Item No. 6 Part No. (with hole)	Item No. 7 Part No.
Bronzestone	23014C	22945C	23007C	22938C	22931C
Gray Beige	23015C	22946C	23008C	22939C	22932C
Almond	23016C	22947C	23009C	22940C	22933C
Stainless Steel	22822C	22838C	22814C	22830C	22934C
Sandalwood	23017C	22948C	23010C	22941C	22935C
Walnut	23018C	22949C	23011C	22942C	22936C

ITEM NO.	PART NO.	DESCRIPTION
21	62220-C	Evaporator Assembly
22	70767-C	Clip - Evap. Retaining
23	70772-C	Plug - Drain
24	31517-C	Power Cord
25	31475-C	Fan Blade
26	70018-C	Hex Nut - Fan Blade
27	19-15509-51-550	Fan Motor 115V
28	70009-C	Screw - Fan Motor
29	22899-C	Shroud - Fan
30	38417001	Screw - #8-18 x 3/8" Lg. (Fan Shroud)
31	75524-C	Clip (Front and Rear Panels)
32	51579-C	Bubbler Assembly
	51350-C	Bubbler Assembly - Bronzestone
33	40617-C	Orifice Assembly
	40066-C	Orifice Assembly - Bronzestone
34	50934-C	Guard
35	51577-C	Pedestal
	50373-C	Pedestal - Bronzestone
36	70012-C	Locknut
37	62152-C	Condenser
38	66202-C	Drier
39	See Color Table	Panel -Right Rear
40	See Color Table	Panel -Left Rear
41	See Color Table	Panel - Front Lower
42	10-15161-43-550	Stud - Compressor Mtg.
43	10-08067-40-570	Grommet - Compressor Mtg.
44	19037000	Clip - Compressor Mtg.
45*	35767-C	Compressor Serv. Pak 115V
46	31025-C	Overload/Relay Assembly 115V
47	35766-C	Cover - Relay
48	66214-C	Heat Exchanger
49	40614-C	Drain Tube
50	50400-C	Gasket - Drain
51	50401-C	Ring Support - Drain
52	70444-C	Clamp - Drain Gasket
53	70016-C	Hex Nut #10-32
54	31513-C	Cold Control
55	See Color Table	Adaptor - Basin
56	21903-C	Basin
	21905-C	Basin - Bronzestone
57	70002-C	Screw - #10 x 1/2" Lg. HHSM
58	19-42439-01-550	Cover - Electrical Shield
NOT SHOWN	40-06609-43-730	Hanger Bracket
NOT SHOWN	70788-C	Y - Strainer (SEE FIG. 4)

* INCLUDES RELAY & OVERLOAD. IF UNDER WARRANTY, REPLACE WITH SAME COMPRESSOR USED IN ORIGINAL ASSEMBLY.

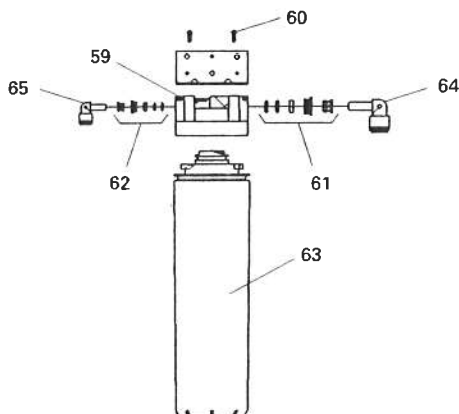
NOTE: All correspondence pertaining to any of the above water coolers or orders for repair parts MUST include Model No. and Serial No. of cooler, name and part number of replacement part.

LIEA / LIEA FILTER PARTS LIST

ITEM NO.	PART NO.	DESCRIPTION
59	51294C	Filter Head Assy
60	70792C	Screw #8-18 x .75 PH
61	70823C	Fitting - Superseal 3/8" (10 mm)
62	70822C	Fitting - Superseal 1/4" (6 mm)
63	51295C	Filter Assy
64	70818C	Elbow - 3/8" (10 mm)
65	70817C	Elbow - 1/4" (6 mm)

EBFSA8 220V 50 Hz. PARTS LIST

ITEM NO.	PART NO.	DESCRIPTION
25	30277C	Fan Blade
27	31431C	Fan Motor 220V
45	35763C	Compressor Service Pack 220V
46	31024C	Overload/Relay Assembly 220V

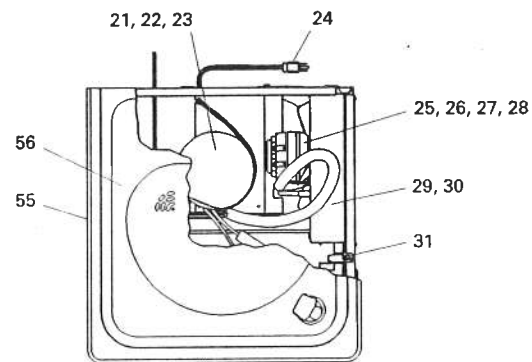


TROUBLE SHOOTING & MAINTENANCE

- Orifice Assy:** Mineral deposits on orifice can cause water flow to spurt or not regulate. Mineral deposits may be removed from orifice with a small round file not over 1/8" dia. or small diameter wire.
CAUTION: Do not file or cut orifice materials.
- Stream Regulator:** If orifice is free of material deposits, regulate flow as in "START-UP" instruction on page 3.
- Water Coming Out Of Bubbler Continuously:** Turn adjustment screw (Item 13, Fig. 4) "Counter - Clockwise" until water flow from bubbler STARTS. Turn adjustment screw "Clockwise" until water flow STOPS. Then turn additional 1/2 turn.
NOTE: Adjustments stated are as viewed from underneath unit (bottom side of dispenser panel - Item 1, Fig. 4, Page 3).
- Temperature Control:** Factory set for 50° F water ($\pm 5^\circ$) under normal conditions. For colder water, adjust screw on (Item 54, page 4), clockwise.
- Ventilation:** Cabinet louvers and condenser fins should be periodically cleaned with a brush, air hose, or a vacuum. Excess dirt or poor ventilation can cause no cold water and compressor cycling on the compressor overload protector.
- Lubrication:** Motors are lifetime lubricated.
- Actuation of Quick Connect Water Fitting:** Cooler is provided with lead-free connectors which utilize an o-ring water seal. To remove tubing from the fitting, relieve water pressure, push in on the gray collar while pulling on the tubing. (See Fig. 2) To insert tubing, push tube straight into fitting until it reaches a positive stop, approximately 3/4".
- CAUTION:** Cleaning of Bronzestone Models requires special care. Outer surfaces must be cleaned with a mild detergent or mixture of vinegar and water only, rinsed and wiped dry. Abrasive and acidic cleaners may eventually damage the Bronzestone finish.

COLOR TABLE

PANEL COLOR	BASIN ADAPTOR COLOR	Item No. 39 Part No.	Item No. 40 Part No. (non-filter models only)	Item No. 40 Part No. (filter models only)	Item No. 41 Part No.	Item No. 55 Part No.
Bronzestone	Brown	22966-C	22959-C	N/A	22952-C	51552-C
Gray Beige	Gray	22967-C	22960-C	23078-C	22953-C	51551-C
Almond	Gray	22968-C	22961-C	N/A	22954-C	51551-C
Stainless Steel	Gray	22862-C	22854-C	23079-C	22955-C	51551-C
Sandalwood	Brown	22969-C	22962-C	N/A	22956-C	51551-C
Walnut	Brown	22970-C	22963-C	N/A	22957-C	51551-C



See Fig. 5, Page 3 for Push Bar Mechanism

